

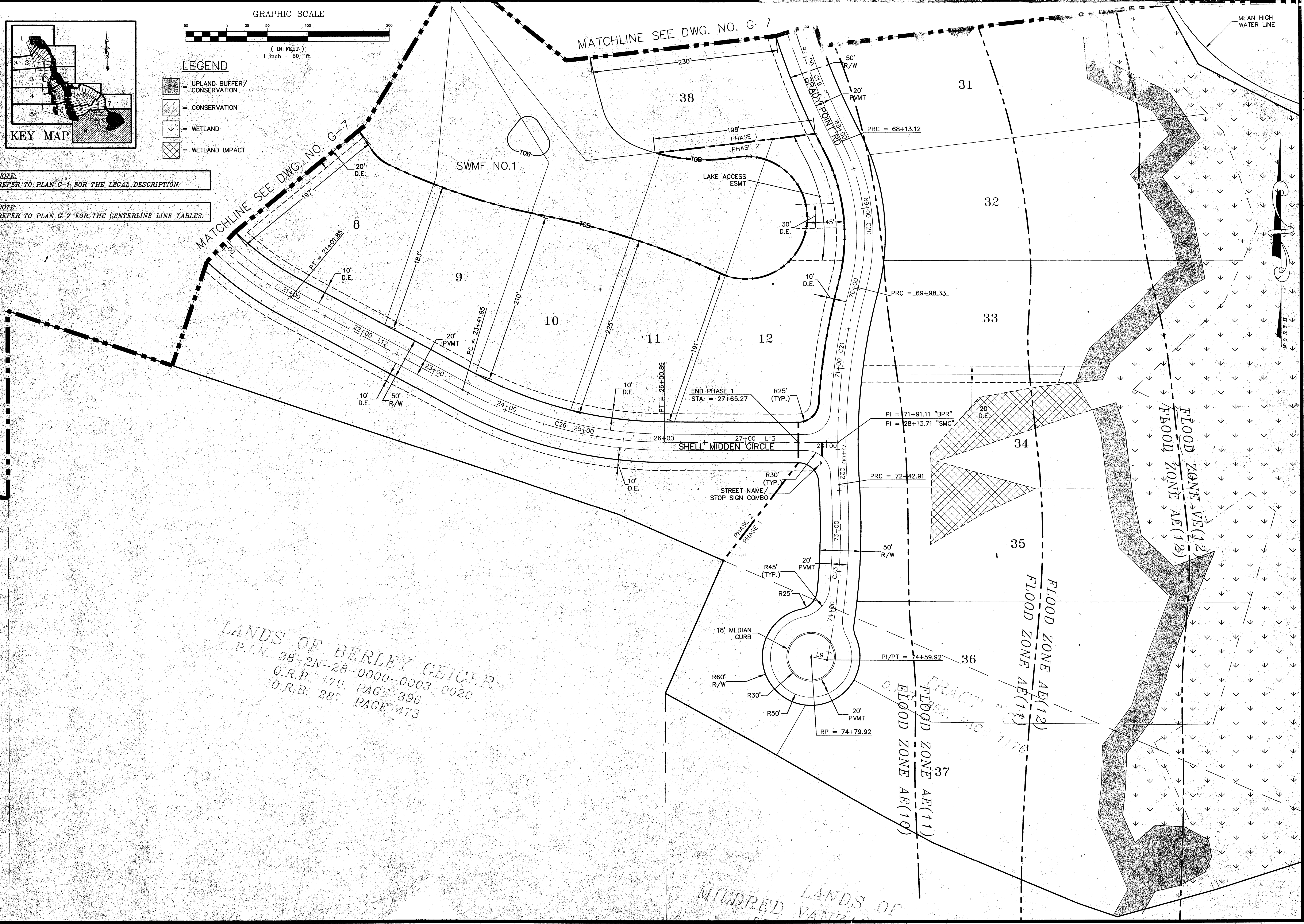
- LEGEND**
- = UPLAND BUFFER/ CONSERVATION
 - = CONSERVATION
 - = WETLAND
 - = WETLAND IMPACT

NOTE:
REFER TO PLAN G-1 FOR THE LEGAL DESCRIPTION.

NOTE:
REFER TO PLAN G-7 FOR THE CENTERLINE LINE TABLES.

MATCHLINE SEE DWG. NO. G-7

MATCHLINE SEE DWG. NO. G-1



LANDS OF BERLEY GEIGER
P.I.N. 38-2N-28-0000-0003-0020
O.R.B. 179, PAGE 396
O.R.B. 287, PAGE 473

MILDRED VANZ
LANDS OF

NO.	DATE	DESCRIPTION
1	5/27/04	ENARGE R/W
2	9/16/04	REV. CUL-DE-SAC R/W RADIUS

DESIGNED BY: PLB
DRAWN BY: SS, SM, AK
CHECKED BY: VJD
DATE: JULY, 2003
PROJ. NO.: 0205-280

VINCENT J. DUNN
REGISTERED ENGINEER NO. 38452
ENG. BUS. NO. 4846

Hill, Boring, & Dunn & Associates, Inc.
CIVIL ENGINEERS / LAND PLANNERS
7850 BELFORT PARKWAY, SUITE 1600
JACKSONVILLE, FLORIDA 32256
904-281-1121

BRADY POINT PRESERVE
FOR:
BRADY POINT PRESERVE, LLC
NASSAU COUNTY, FLORIDA
GEOMETRY PLAN

G-8
DWG. NO.
SHEET 13 OF 40

NOT RELEASED FOR CONSTRUCTION