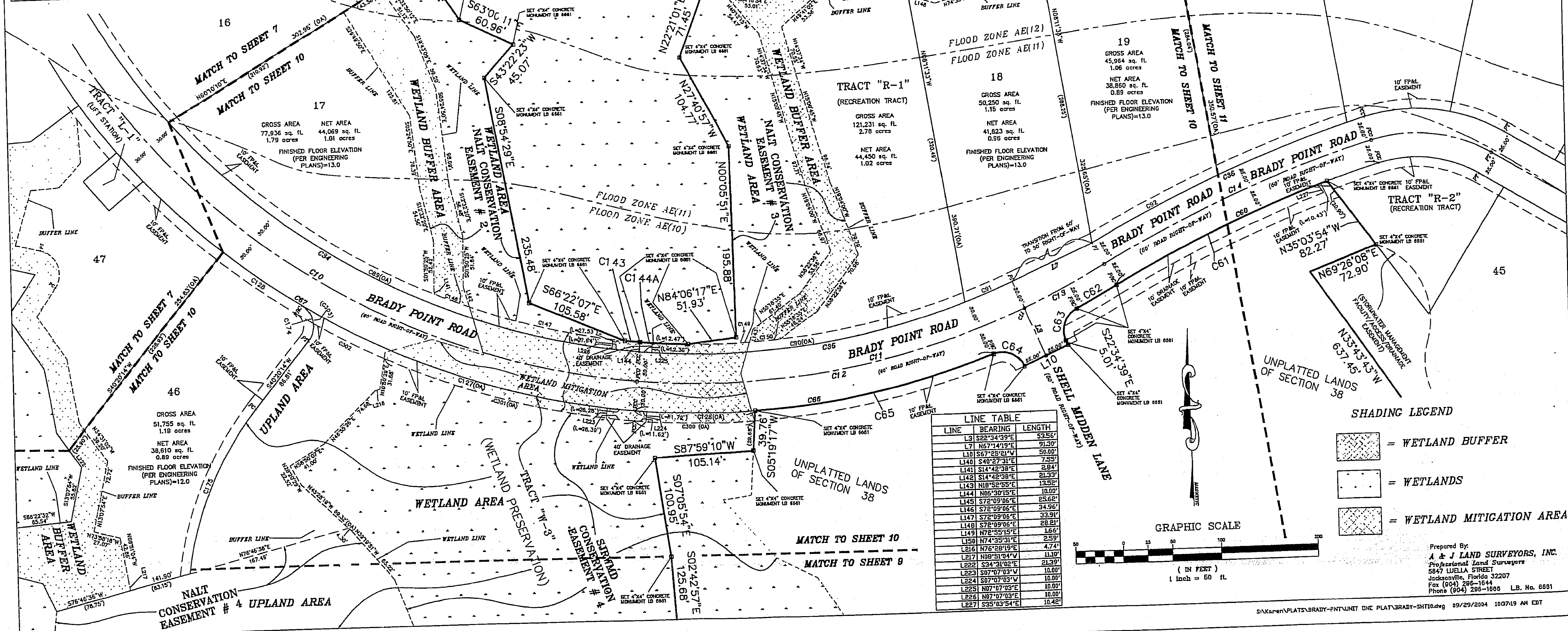


# BRADY POINT PRESERVE UNIT ONE

A PARCEL OF LAND BEING A PORTION OF THE "D. FERNANDEZ GRANT", SECTIONS 38 AND 41, TOWNSHIP 2 NORTH, RANGE 28 EAST, NASSAU COUNTY, FLORIDA, TOGETHER WITH A PORTION OF THE "WILLIAM BERRIE GRANT", SECTION 40, TOWNSHIP 2 NORTH, RANGE 28 EAST, NASSAU COUNTY, FLORIDA

CURVE	LENGTH	RADIUS	BEARING	CHORD	DELTA	TANGENT
C10	697.79'	745.00'	S56°39'48"E	673.57'	57°39'55"	376.86'
C11	307.40'	815.00'	N78°39'37"E	499.32'	35°40'30"	262.27'
C12	413.67'	815.00'	N81°57'48"E	409.25'	29°04'54"	211.39'
C13	93.81'	815.00'	N64°07'30"E	93.75'	6°35'41"	46.93'
C14	382.99'	1300.00'	S67°29'43"W	301.91'	13°20'11"	151.98'
C15	669.69'	715.00'	S36°39'48"E	645.48'	53°39'55"	361.58'
C16	398.44'	785.00'	N81°57'48"E	394.18'	29°04'54"	203.61'
C17	307.84'	1325.00'	S67°38'29"W	307.15'	13°20'11"	149.06'
C18	296.77'	1275.00'	S67°29'43"W	296.10'	13°20'11"	126.67'
C19	240.62'	1275.00'	S66°14'03"E	240.26'	3°16'52"	24.06'
C20	48.10'	840.00'	N63°28'03"E	48.10'	86°41'11"	23.59'
C21	37.82'	25.00'	N65°55'49"W	34.32'	86°42'19"	23.60'
C22	37.83'	25.00'	N63°28'03"E	34.32'	17°09'59"	127.54'
C23	253.17'	845.00'	S79°18'01"E	252.22'	25°47'14"	193.43'
C24	380.31'	845.00'	N83°36'38"E	377.11'	33°39'55"	292.03'
C25	725.89'	775.00'	S36°39'48"E	699.63'	43°59'44"	288.88'
C26	549.03'	715.00'	S61°29'53"E	535.64'	25°13'16"	175.62'
C27	345.55'	785.00'	N69°21'10"E	342.71'	3°51'38"	26.46'
C28	52.89'	785.00'	S64°00'38"W	147.02'	6°21'38"	73.62'
C29	147.09'	1325.00'	S67°38'29"W	147.02'	8°37'15"	63.69'
C30	127.14'	845.00'	S70°10'11"E	127.02'	26°39'08"	182.58'
C31	360.51'	775.00'	S53°15'12"E	357.26'	11°13'59"	48.31'
C32	97.13'	775.00'	S53°15'12"E	97.07'	3°39'19"	24.73'
C33	15.17'	705.00'	S85°19'25"E	15.17'	3°03'55"	18.86'
C34	49.44'	775.00'	S67°38'29"W	49.44'	13°18'53"	82.29'
C35	37.72'	705.00'	S75°35'19"E	37.72'	4°53'49"	30.14'
C36	163.89'	785.00'	N86°44'56"E	163.82'	2°24'21"	16.27'
C37	32.54'	775.00'	S88°37'37"E	32.54'	8°32'07"	92.84'
C38	42.40'	25.00'	N08°13'12"W	42.40'	19°20'01"	133.71'
C39	180.84'	324.50'	S24°22'19"W	178.51'	5°52'21"	40.26'
C40	127.34'	855.00'	S61°13'34"E	127.22'	52°24'38"	12.30'
C41	264.89'	785.00'	S61°13'34"E	264.83'		
C42	80.46'	785.00'	S31°30'10"E	80.43'		
C43	22.87'	25.00'	S31°30'10"E	22.87'		



LINE	BEARING	LENGTH
L3	S22°34'39"E	93.56'
L7	N67°14'49"E	91.30'
L10	S67°25'21"W	50.00'
L140	S40°27'31"E	7.53'
L141	S14°42'38"E	2.84'
L142	S14°42'38"E	21.33'
L143	N18°52'55"E	13.52'
L144	N86°30'15"E	10.00'
L145	S72°09'06"E	34.56'
L146	S72°09'06"E	33.51'
L147	S72°09'06"E	28.81'
L148	N72°55'15"E	1.66'
L149	N74°33'31"E	2.59'
L216	N76°28'19"E	4.74'
L217	N88°51'04"W	11.31'
L222	S34°31'02"E	21.39'
L223	S07°07'03"W	10.00'
L224	S07°07'03"W	10.00'
L225	N07°07'03"E	10.00'
L226	N07°07'03"E	10.00'
L227	S35°03'54"E	10.42'

**SHADING LEGEND**

- [Stippled pattern] = WETLAND BUFFER
- [Dotted pattern] = WETLANDS
- [Cross-hatched pattern] = WETLAND MITIGATION AREA

**GRAPHIC SCALE**  
 (IN FEET)  
 1 inch = 60 ft.

Prepared By:  
**A & J LAND SURVEYORS, INC.**  
 Professional Land Surveyors  
 5847 WELLS STREET  
 Jacksonville, Florida 32207  
 Fax (904) 286-1644  
 Phone (904) 286-1800 L.B. No. 6681