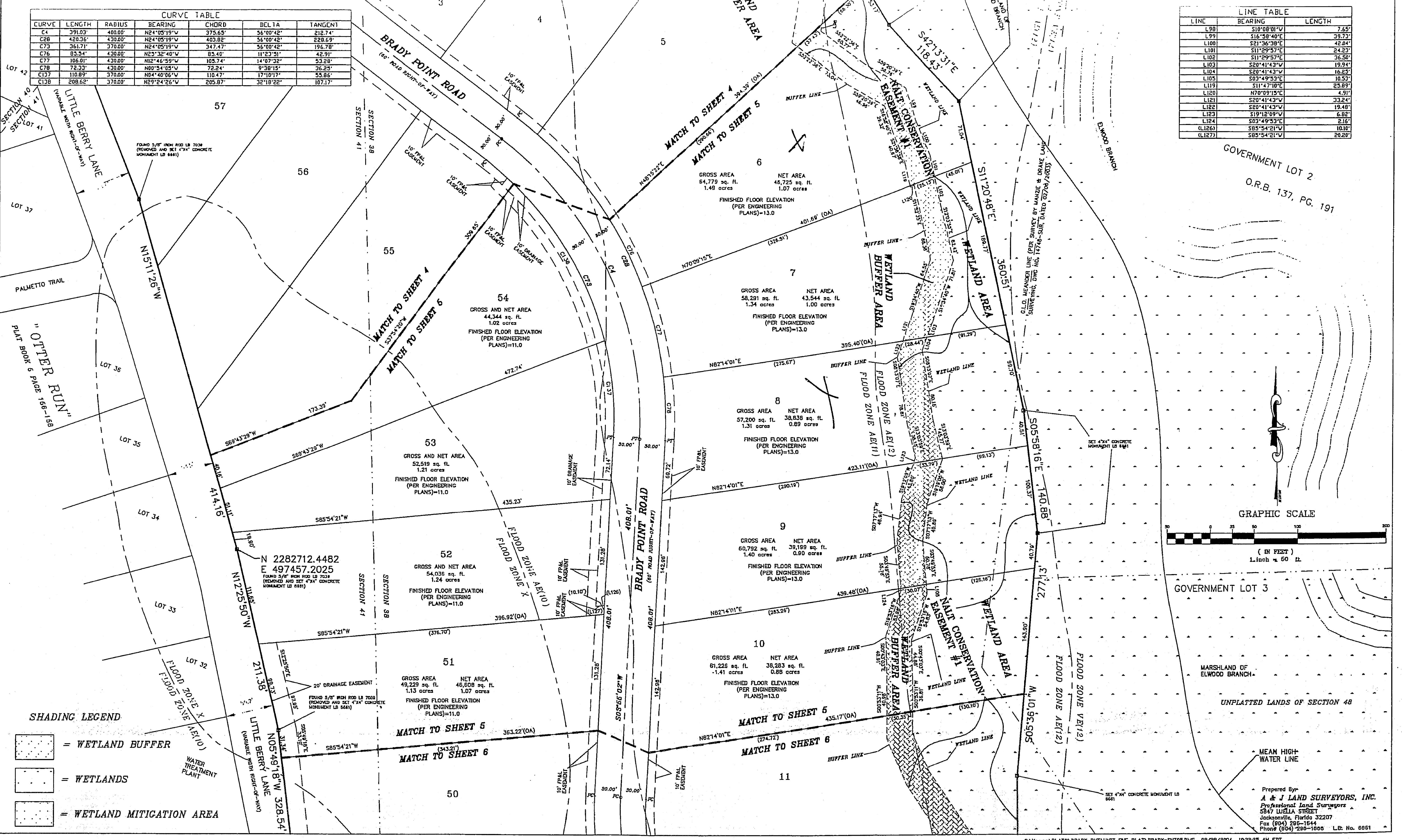


BRADY POINT PRESERVE UNIT ONE

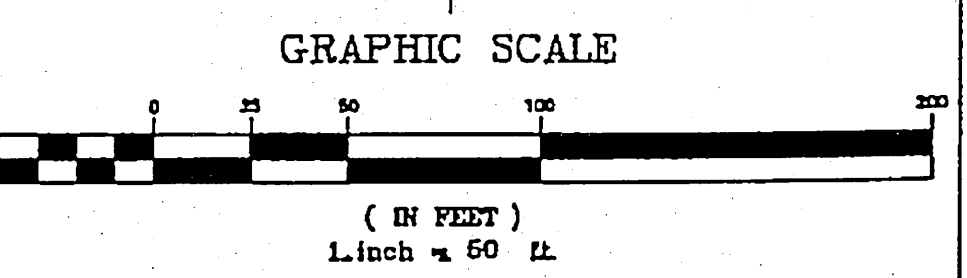
SECTION 40, TOWNSHIP 2 NORTH, RANGE 26 EAST, NASSAU COUNTY, FLORIDA
TOGETHER WITH A PORTION OF THE WILKINSON BEHNE
GRANT, SECTION 40, TOWNSHIP 2 NORTH, RANGE 26 EAST, NASSAU COUNTY, FLORIDA

CURVE TABLE					
CURVE	LENGTH	RADIUS	BEARING	CHORD	TANGENT
C4	391.03'	400.00'	N24°05'19"W	375.63'	36°00'42"
C28	420.36'	430.00'	N24°05'19"W	403.82'	36°00'42"
C73	361.71'	370.00'	N24°05'19"W	347.47'	36°00'42"
C76	85.34'	430.00'	N23°32'40"W	85.40'	11°23'31"
C77	186.01'	430.00'	N12°46'59"W	185.74'	14°07'32"
C78	72.33'	430.00'	N80°34'05"W	72.34'	9°38'15"
C107	110.89'	370.00'	N04°40'06"W	110.47'	17°10'17"
C108	208.62'	370.00'	N29°24'26"W	205.87'	32°18'22"

LINE TABLE		
LINE	BEARING	LENGTH
L98	S10°08'01"W	7.65'
L99	S16°58'40"E	39.23'
L100	S21°34'30"E	42.04'
L101	S11°29'57"E	24.23'
L102	S11°29'57"E	36.50'
L103	S20°41'43"W	19.94'
L104	S20°41'43"W	16.83'
L105	S03°49'53"E	10.53'
L119	S11°47'10"E	25.89'
L120	N70°09'15"E	1.91'
L121	S20°41'43"W	33.24'
L122	S20°41'43"W	19.48'
L123	S19°12'09"W	6.82'
L124	S03°49'53"E	2.16'
(L126)	S03°54'21"W	10.10'
(L127)	S03°54'21"W	20.20'



GOVERNMENT LOT 2
O.R.B. 137, PG. 191



GOVERNMENT LOT 3

MARSHLAND OF ELWOOD BRANCH
UNPLATTED LANDS OF SECTION 48

Prepared By:
A & J LAND SURVEYORS, INC.
Professional Land Surveyors
5847 WUELLA STREET
JACKSONVILLE, FLORIDA 32207
Fax (904) 298-1644
Phone (904) 298-1800 L.S. No. 6661