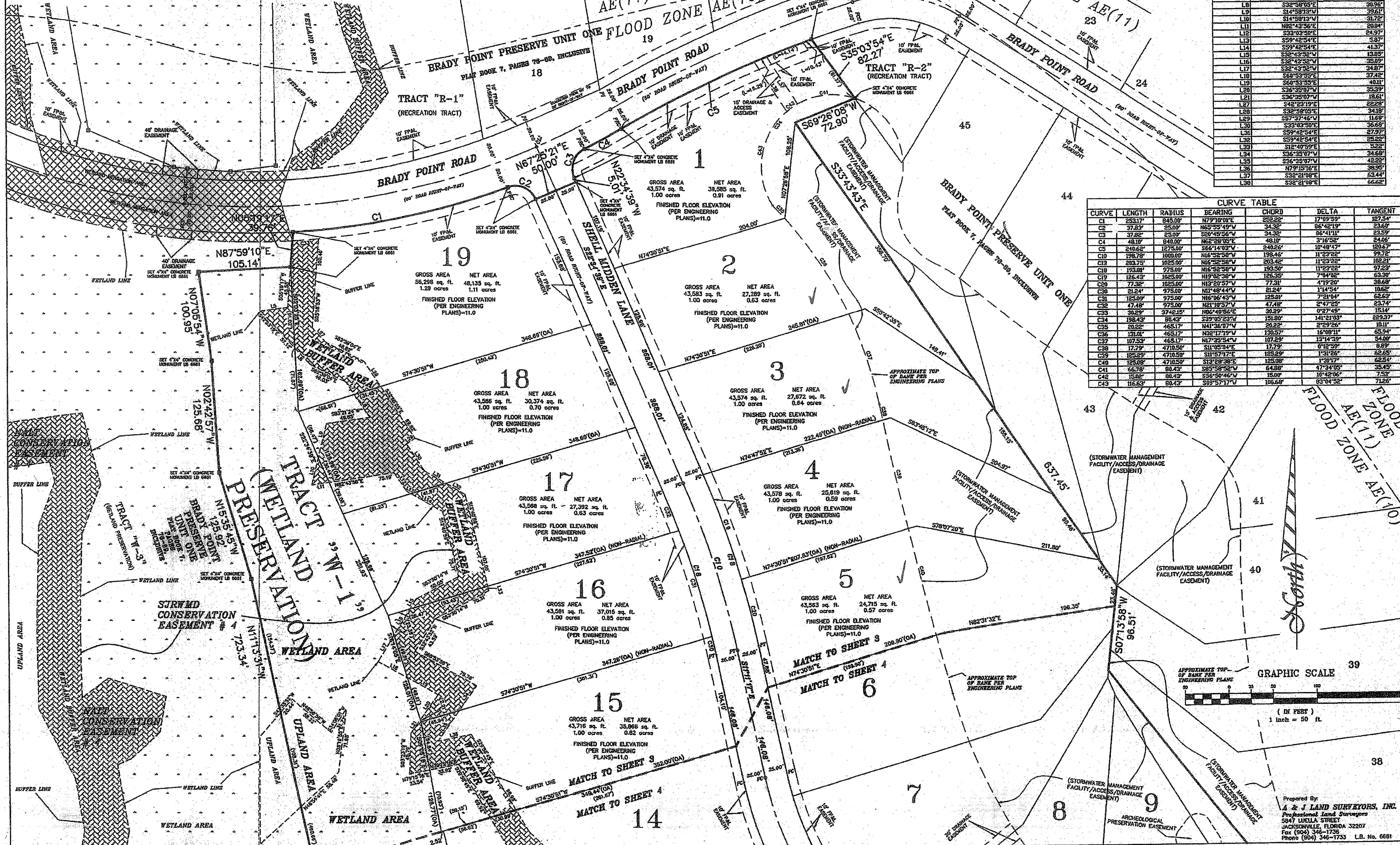


BRADY POINT PRESERVE UNIT TWO

A PORTION OF THE "D. FERNANDEZ GRANT", SECTION 38, TOWNSHIP 2 NORTH, RANGE 28 EAST, NASSAU COUNTY, FLORIDA

LINE	BEARING	LENGTH
L5	S83°42'21"W	31.81'
L6	S42°23'19"E	25.13'
L7	S32°58'05"E	16.78'
L8	S32°58'05"E	30.95'
L9	S14°58'13"W	39.61'
L10	S14°58'13"W	31.72'
L11	N62°43'36"E	20.41'
L12	S33°13'50"E	24.97'
L13	S59°42'54"E	5.87'
L14	S59°42'54"E	41.37'
L15	S38°43'52"W	13.85'
L16	S38°43'52"W	35.89'
L17	S32°43'52"W	34.87'
L18	S60°33'59"E	37.42'
L19	S60°33'59"E	48.11'
L20	S38°23'07"E	35.39'
L21	S38°23'07"E	18.61'
L22	S42°23'19"E	22.28'
L23	S32°58'05"E	34.18'
L24	S27°37'46"W	11.69'
L25	S33°03'30"E	36.68'
L26	S59°42'54"E	27.97'
L27	S38°23'07"E	28.22'
L28	S38°23'07"E	18.61'
L29	S27°37'46"W	11.69'
L30	S33°03'30"E	36.68'
L31	S59°42'54"E	27.97'
L32	S38°23'07"E	28.22'
L33	S38°23'07"E	18.61'
L34	S34°35'07"W	34.68'
L35	S34°35'07"W	42.22'
L36	N79°15'16"E	38.95'
L37	S32°21'08"E	63.44'
L38	S32°21'08"E	66.62'

CURVE	LENGTH	RADIUS	BEARING	CHORD	DELTA	TANGENT
C1	258.17'	845.00'	N79°18'01"E	252.22'	17°09'59"	127.54'
C2	37.82'	25.00'	N65°55'49"W	34.32'	86°42'19"	23.60'
C3	37.82'	25.00'	S80°45'56"W	34.32'	86°41'11"	23.59'
C4	48.10'	840.00'	N62°28'05"E	48.10'	3°16'38"	24.06'
C5	240.62'	1275.00'	S66°14'03"W	240.26'	10°48'47"	150.47'
C10	198.78'	1000.00'	N16°52'38"W	198.46'	11°33'22"	99.72'
C13	203.73'	1025.00'	N16°52'38"W	203.42'	11°33'22"	102.21'
C18	193.81'	975.00'	N16°52'38"W	193.40'	11°33'22"	97.23'
C19	126.43'	1025.00'	N19°28'38"W	126.35'	7°04'02"	63.30'
C20	77.32'	1025.00'	N19°28'38"W	77.31'	4°19'20"	38.68'
C30	121.24'	975.00'	N11°48'44"W	121.24'	1°14'54"	10.62'
C31	123.09'	975.00'	N16°06'43"W	123.09'	7°21'04"	62.63'
C32	47.48'	975.00'	N21°10'57"W	47.48'	2°47'25"	23.74'
C33	30.29'	374.35'	N86°40'56"E	30.29'	0°27'49"	15.14'
C34	198.42'	814.33'	S39°05'23"W	198.50'	141°21'03"	229.37'
C35	20.22'	465.17'	N41°36'07"W	20.22'	2°29'26"	10.11'
C36	131.01'	465.17'	N32°17'19"W	130.57'	16°08'11"	65.94'
C37	107.53'	465.17'	N17°35'54"W	107.29'	13°14'39"	54.00'
C38	17.79'	4710.50'	S11°05'04"E	17.79'	0°12'59"	8.89'
C39	125.89'	4710.50'	S11°57'17"E	125.89'	1°31'26"	62.65'
C40	125.08'	4710.50'	S13°28'38"E	125.08'	1°31'17"	62.55'
C41	66.78'	814.33'	S83°58'52"W	64.88'	17°24'05"	35.45'
C42	15.08'	814.33'	S83°58'46"W	15.08'	10°42'06"	7.53'
C43	116.63'	814.33'	S89°57'17"W	106.68'	83°04'52"	71.26'



Prepared By:
A & J LAND SURVEYORS, INC.
Professional Land Surveyors
5847 LUCILLA STREET
JACKSONVILLE, FLORIDA 32207
Tel: (904) 346-1736
Fax: (904) 346-1733 L.B. No. 6661