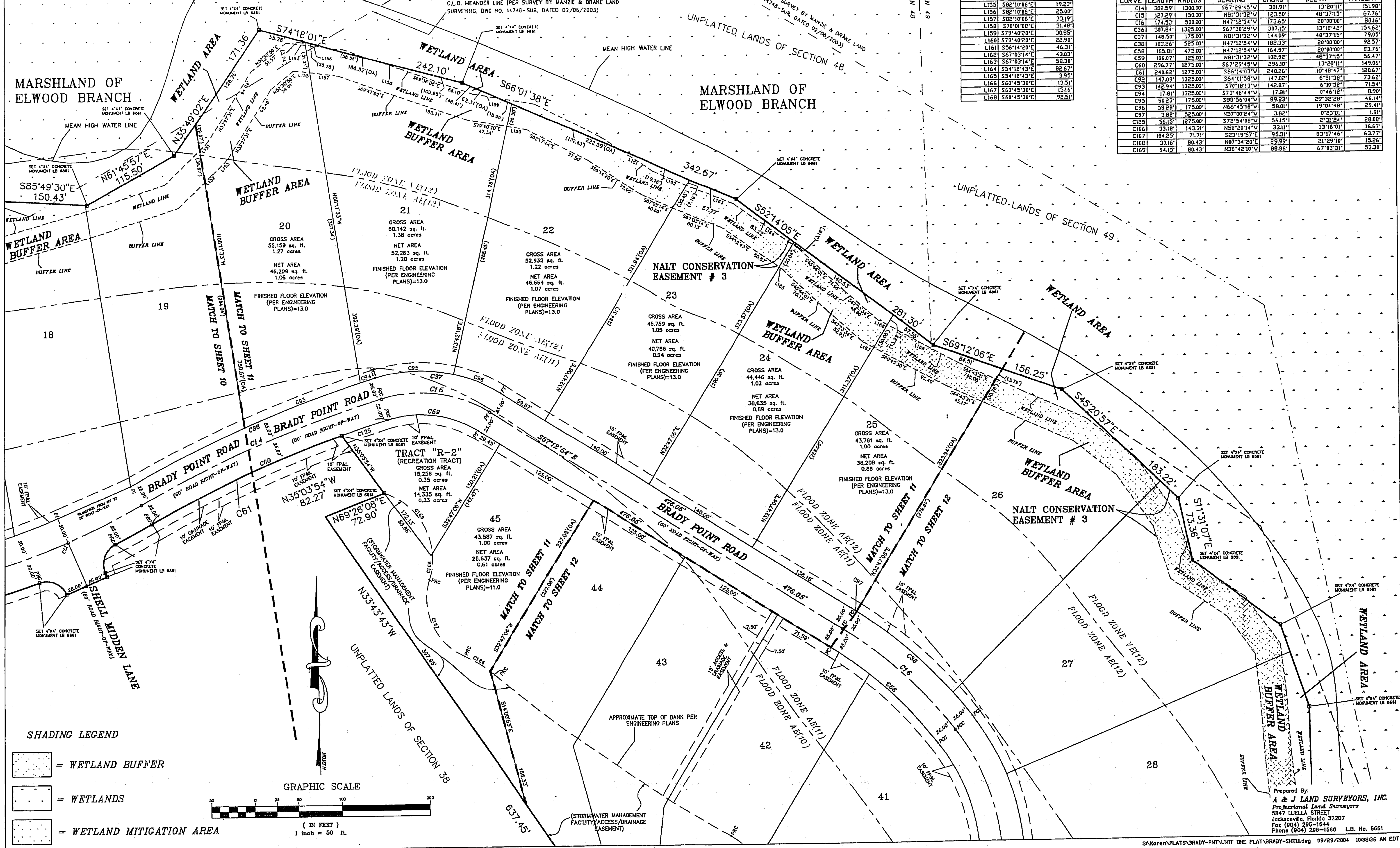


BRADY POINT PRESERVE UNIT ONE

A PARCEL OF LAND BEING A PORTION OF THE "D. FERNANDEZ GRANT", SECTIONS 38 AND 41, TOWNSHIP 2 NORTH, RANGE 28 EAST, NASSAU COUNTY, FLORIDA, TOGETHER WITH A PORTION OF THE "WILLIAM BERRIE GRANT", SECTION 40, TOWNSHIP 2 NORTH, RANGE 28 EAST, NASSAU COUNTY, FLORIDA

LINE	BEARING	LENGTH
L149	N72°55'15"E	1.66'
L150	N74°35'31"E	2.59'
L151	N46°42'23"E	13.58'
L152	N46°42'23"E	11.01'
L153	N46°42'23"E	26.13'
L154	S82°10'06"E	23.14'
L155	S82°10'06"E	19.23'
L156	S82°10'06"E	23.00'
L157	S82°10'06"E	33.19'
L158	S70°01'08"E	31.48'
L159	S79°40'20"E	30.85'
L160	S79°40'20"E	22.99'
L161	S55°14'20"E	46.31'
L162	S67°03'14"E	43.03'
L163	S67°03'14"E	58.30'
L164	S54°12'43"E	82.67'
L165	S54°12'43"E	3.95'
L166	S60°45'30"E	15.16'
L167	S60°45'30"E	15.16'
L168	S60°45'30"E	92.51'

CURVE	LENGTH	RADIUS	BEARING	CHORD	DELTA	TANGENT
C14	302.39'	1300.00'	S67°29'43"W	301.31'	13°30'11"	151.98'
C15	127.29'	150.00'	N81°31'32"W	123.30'	48°37'15"	67.76'
C16	174.53'	300.00'	N47°12'34"W	173.65'	20°00'00"	88.61'
C36	207.84'	1325.00'	S67°30'29"W	207.15'	13°18'42"	154.62'
C37	148.50'	175.00'	N81°31'32"W	144.09'	48°37'15"	79.05'
C38	182.26'	525.00'	N47°12'34"W	182.33'	20°00'00"	92.57'
C38	165.81'	475.00'	N47°12'34"W	164.97'	20°00'00"	83.76'
C39	106.07'	125.00'	N81°31'32"W	102.92'	48°37'15"	56.47'
C60	296.77'	1275.00'	S67°29'43"W	296.10'	13°30'11"	149.06'
C61	240.62'	1275.00'	S66°14'03"W	240.26'	10°48'47"	120.67'
C92	147.89'	1325.00'	S67°01'58"W	147.02'	6°21'38"	73.62'
C93	142.94'	1325.00'	S70°18'12"W	142.87'	6°19'32"	71.54'
C94	17.81'	1325.00'	S73°46'44"W	17.81'	0°46'12"	8.90'
C95	90.27'	175.00'	S89°56'04"W	89.23'	29°32'28"	46.14'
C96	38.28'	175.00'	N66°45'18"W	38.01'	19°04'48"	29.41'
C97	3.82'	325.00'	N57°00'24"W	3.82'	0°25'01"	1.91'
C125	56.15'	1275.00'	S72°54'08"W	56.15'	2°31'24"	28.09'
C166	33.18'	143.31'	N58°20'14"W	33.11'	13°16'01"	16.67'
C167	104.25'	71.71'	S21°19'57"E	95.31'	83°17'46"	63.77'
C168	30.15'	80.43'	N87°34'20"E	29.99'	21°29'10"	15.26'
C169	94.15'	80.43'	N36°42'10"W	88.86'	67°03'31"	33.30'



SHADING LEGEND

- = WETLAND BUFFER
- = WETLANDS
- = WETLAND MITIGATION AREA

GRAPHIC SCALE
(IN FEET)
1 inch = 50 ft

Prepared By:
A & J LAND SURVEYORS, INC.
Professional Land Surveyors
5847 LUELLA STREET
JACKSONVILLE, FLORIDA 32207
Fax (904) 298-1644
Phone (904) 298-1686 L.B. No. 6661