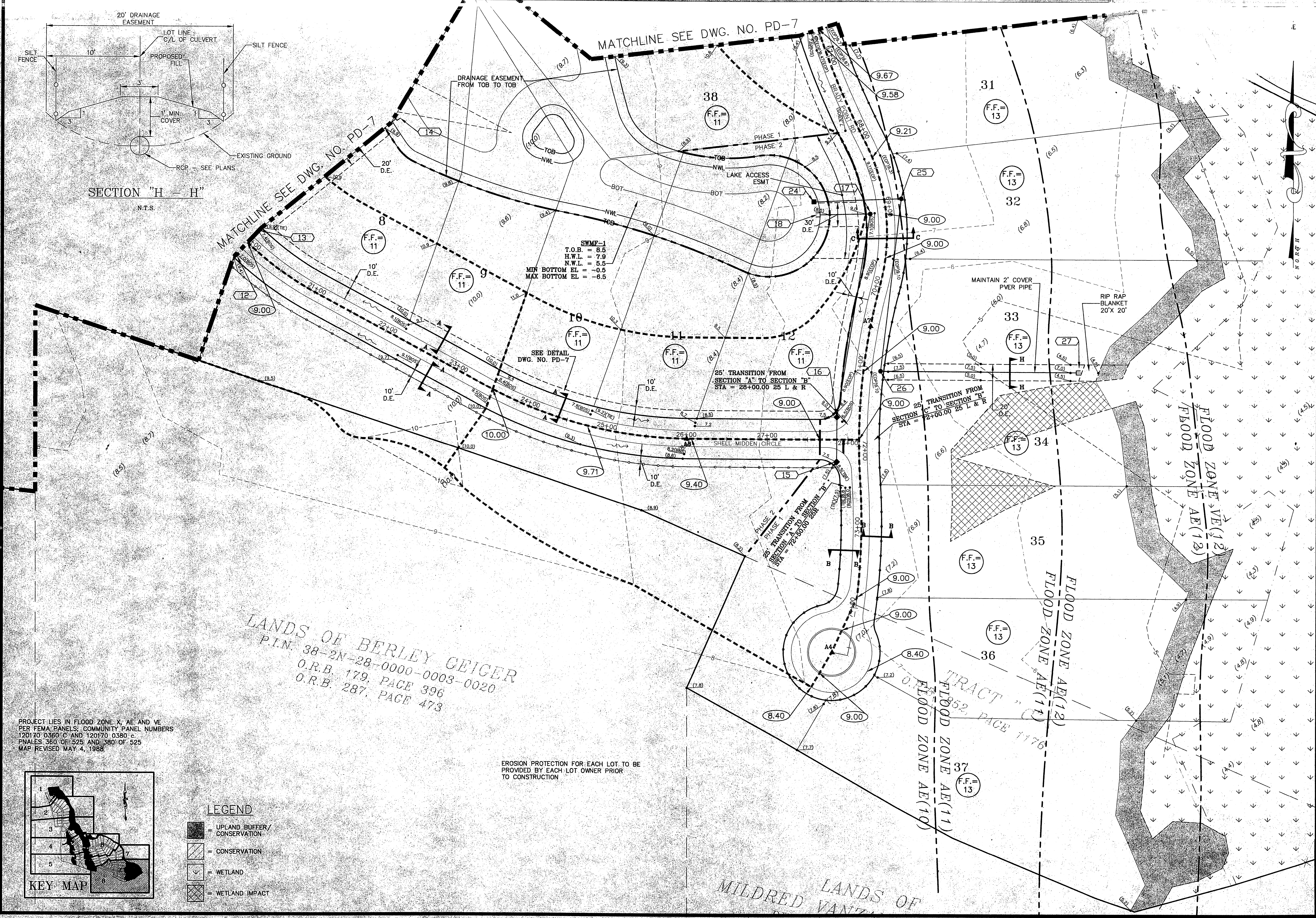


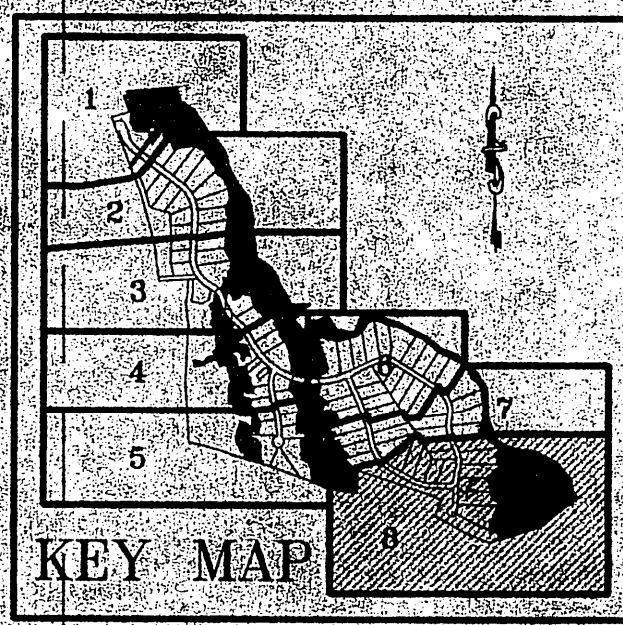
SECTION "H = H"
N.T.S.



SWMP-1
T.O.B. = 8.5
H.W.L. = 7.9
N.W.L. = 5.5
MIN BOTTOM EL. = -0.5
MAX BOTTOM EL. = -6.5

LANDS OF BERLEY GEIGER
P.I.N. 38-2N-28-0000-0003-0020
O.R.B. 179, PAGE 396
O.R.B. 287, PAGE 473

PROJECT LIES IN FLOOD ZONE X, AE AND VE
PER FEMA PANELS, COMMUNITY PANEL NUMBERS
120170 0360 C AND 120170 0380 C
PNALES 360 OF 525 AND 380 OF 525
MAP REVISED MAY 4, 1988



- LEGEND**
- = UPLAND BUFFER/ CONSERVATION
 - = CONSERVATION
 - = WETLAND
 - = WETLAND IMPACT

EROSION PROTECTION FOR EACH LOT TO BE PROVIDED BY EACH LOT OWNER PRIOR TO CONSTRUCTION

REVISIONS		
NO.	DATE	DESCRIPTION
1	4/7/04	REVISED PER SURVAD COMMENTS
2	9/16/04	REV. CUL-DE-SAC R/W RADIUS

DESIGNED BY: PLB
DRAWN BY: SS, SM, AK
CHECKED BY: VJD
SCALE: 1" = 50'
DATE: JULY, 2003
PROJ. NO.: 0205-280

Hill, Boring, Dunn & Associates, Inc.
CIVIL ENGINEERS / LAND PLANNERS
7850 BELFORT PARKWAY, SUITE 1600
JACKSONVILLE, FLORIDA 32256
904-281-1121

BRADY POINT PRESERVE
FOR:
BRADY POINT PRESERVE, LLC
NASSAU COUNTY, FLORIDA
PAVING AND DRAINAGE PLAN

FILE: PD-8
DWG. NO.
SHEET 21 OF 40

VINCENT J. DUNN
REGISTERED ENGINEER NO. 36522
ENG. BUS. NO. 14946

NOT RELEASED FOR CONSTRUCTION