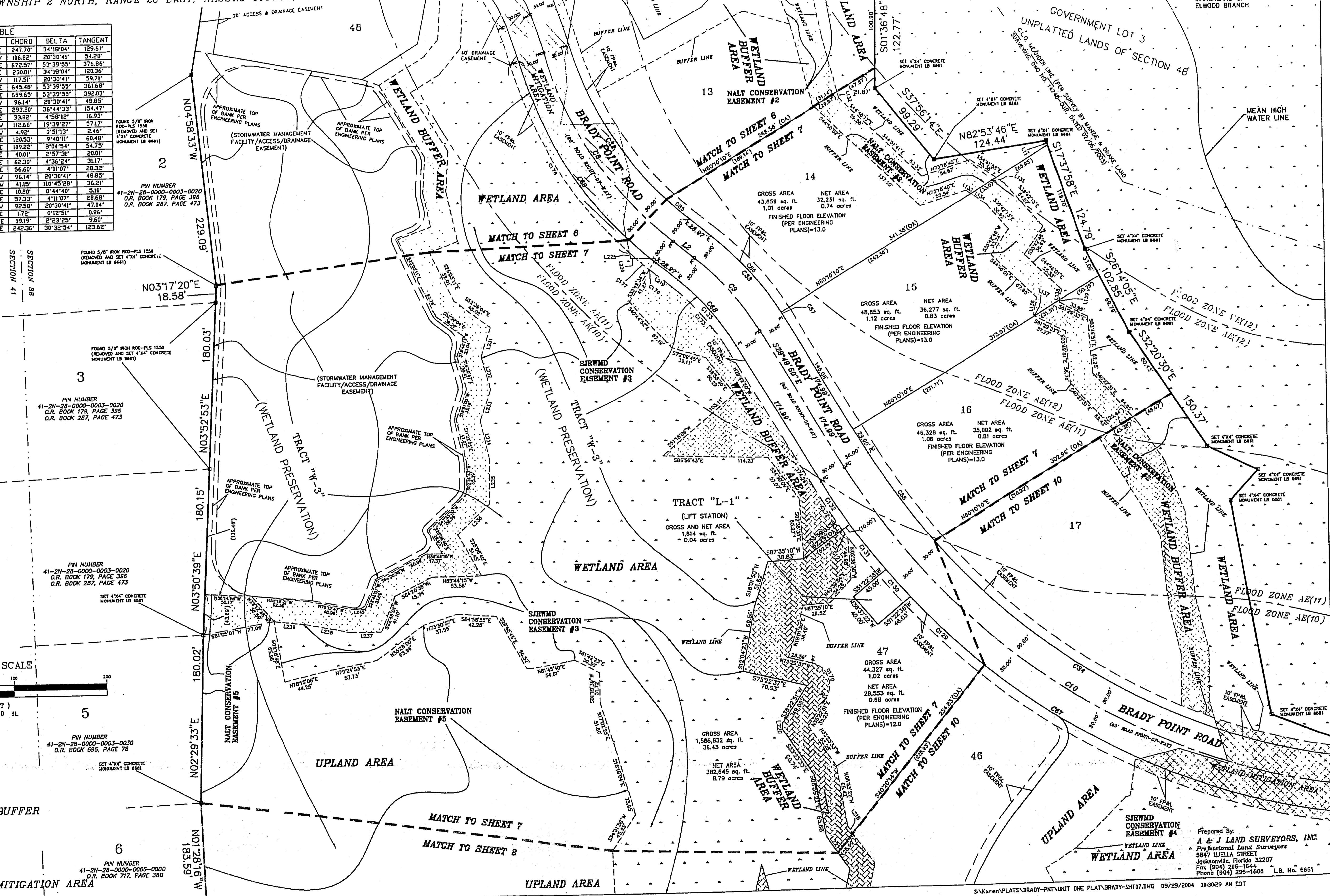


BRADY POINT PRESERVE UNIT ONE

A PARCEL OF LAND BEING A PORTION OF THE "D. FERNANDEZ GRANT", SECTIONS 38 AND 41, TOWNSHIP 2 NORTH, RANGE 28 EAST, NASSAU COUNTY, FLORIDA, TOGETHER WITH A PORTION OF THE "WILLIAM BERRIE GRANT", SECTION 40, TOWNSHIP 2 NORTH, RANGE 28 EAST, NASSAU COUNTY, FLORIDA

CURVE	LENGTH	RADIUS	BEARING	CHORD	DELTA	TANGENT
C8	251.44'	420.00'	S33°11'29"E	247.70'	3°41'04"	129.51'
C9	107.40'	300.00'	N40°05'10"W	106.82'	20°30'41"	54.28'
C10	697.79'	745.00'	S56°39'48"E	678.57'	5°39'55"	376.86'
C11	233.48'	390.00'	S33°11'29"E	230.01'	3°41'04"	120.36'
C12	1181.4'	330.00'	N40°05'10"W	1175.1'	20°30'41"	597.1'
C13	669.69'	715.00'	S56°39'48"E	645.48'	5°39'55"	361.68'
C14	725.89'	775.00'	S56°39'48"E	699.65'	5°39'55"	392.03'
C15	96.66'	270.00'	N40°05'10"W	96.14'	20°30'41"	48.85'
C16	298.28'	465.14'	S34°51'38"E	293.20'	3°41'04"	148.85'
C17	33.83'	390.00'	S47°51'25"E	33.03'	4°58'12"	16.93'
C18	113.22'	330.00'	N40°05'10"W	112.66'	19°39'27"	57.17'
C19	4.92'	330.00'	N40°05'10"W	4.92'	0°51'11"	2.46'
C20	120.67'	715.00'	S34°39'55"E	120.53'	9°40'11"	60.40'
C21	109.32'	775.00'	S43°39'19"E	109.28'	8°04'54"	54.75'
C22	40.02'	775.00'	S49°06'07"E	40.01'	2°57'31"	20.01'
C23	62.31'	775.00'	S36°19'09"E	62.30'	4°36'24"	31.17'
C24	36.61'	775.00'	S31°55'24"E	36.60'	4°11'07"	18.33'
C25	18.28'	25.00'	N19°59'53"W	18.14'	20°30'41"	9.09'
C26	96.66'	270.00'	N40°05'10"W	96.14'	110°45'28"	48.85'
C27	48.33'	25.00'	N19°59'53"W	48.14'	0°44'40"	24.09'
C28	18.28'	785.00'	S34°21'17"E	18.20'	0°44'40"	9.10'
C29	37.34'	785.00'	S31°53'24"E	37.33'	4°11'07"	18.68'
C30	93.08'	260.00'	N40°05'10"W	92.58'	20°30'41"	47.04'
C31	1.72'	460.00'	S58°14'05"E	1.72'	0°12'51"	0.86'
C32	19.19'	460.00'	S48°55'57"E	19.19'	2°23'25"	9.60'
C33	243.26'	460.00'	S31°18'54"E	242.36'	30°32'34"	123.62'

LINE	BEARING	LENGTH
L2	S50°20'31"E	28.97'
L11	S17°37'58"E	5.09'
L12	S14°15'10"E	6.99'
L13	S54°41'55"E	6.85'
L14	S54°41'55"E	19.97'
L15	S54°41'55"E	10.82'
L16	S12°19'34"W	19.46'
L17	S61°29'33"E	1.71'
L18	S12°19'34"W	12.28'
L19	S12°19'34"W	1.90'
L21	N34°31'02"W	9.57'
L219	N50°20'31"E	28.97'
L220	S10°40'19"E	4.20'
L221	S34°31'02"E	22.01'
L225	N87°35'56"W	5.77'
L226	N09°19'52"W	6.11'
L231	S18°44'13"W	33.57'
L232	S14°20'57"E	36.67'
L233	S19°51'05"W	35.87'
L234	S14°20'57"E	43.07'
L235	S02°16'43"W	48.71'
L236	S47°33'30"W	47.56'
L237	N89°06'33"W	31.82'
L238	N78°12'47"W	50.45'
L239	N82°20'06"W	34.98'
L245	N89°06'33"W	12.53'



FOUND 3/8" IRON ROD-PLS 1558 (REMOVED AND SET 4"x4" CONCRETE MONUMENT LB 6641)

FOUND 3/8" IRON ROD-PLS 1558 (REMOVED AND SET 4"x4" CONCRETE MONUMENT LB 6641)

PIN NUMBER 41-2N-28-0000-0003-0020 O.R. BOOK 179, PAGE 396 O.R. BOOK 287, PAGE 473

PIN NUMBER 41-2N-28-0000-0003-0030 O.R. BOOK 179, PAGE 396 O.R. BOOK 287, PAGE 473

PIN NUMBER 41-2N-28-0000-0005-0000 O.R. BOOK 777, PAGE 389

SHADING LEGEND

- [Stippled pattern] = WETLAND BUFFER
- [Dotted pattern] = WETLANDS
- [Cross-hatched pattern] = WETLAND MITIGATION AREA

Prepared By:
A & J LAND SURVEYORS, INC.
Professional Land Surveyors
5847 WUILLA STREET
JACKSONVILLE, FLORIDA 32207
Fax (904) 296-1644
Phone (904) 296-1688 "L.B. No. 6661"