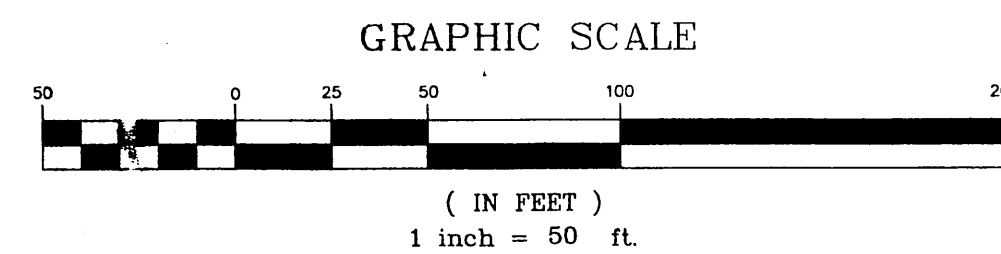


CENTERLINE LINE TABLE		
LINE	LENGTH	BEARING
L1	38.49'	S70°15'20"W
L2	51.48'	N52°05'40"W
L3	593.24'	N52°05'40"W
L4	408.01'	N03°55'02"E
L5	96.34'	S56°32'38"E
L6	28.97'	S50°20'31"E
L7	174.99'	N29°49'50"W
L8	476.05'	S57°12'54"E
L9	20.00'	N77°20'18"W
L10	411.57'	S22°34'39"E
L11	146.08'	S11°11'17"E
L12	240.11'	S60°39'55"E
L13	212.82'	N88°55'27"W

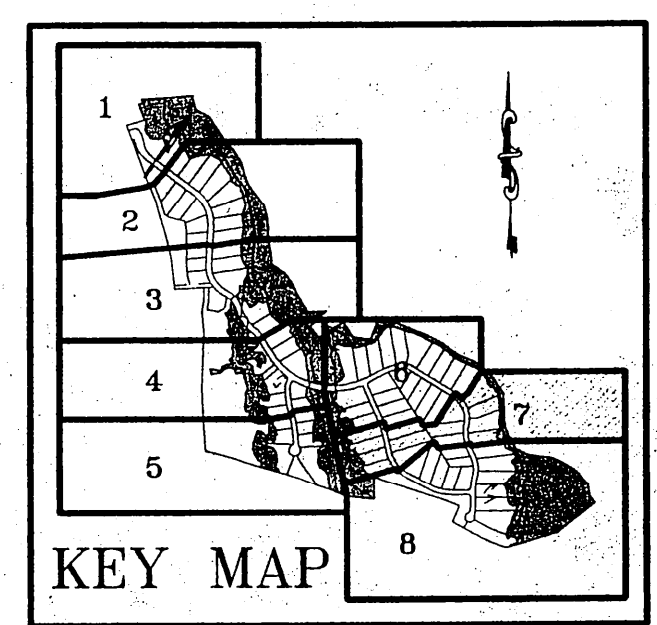
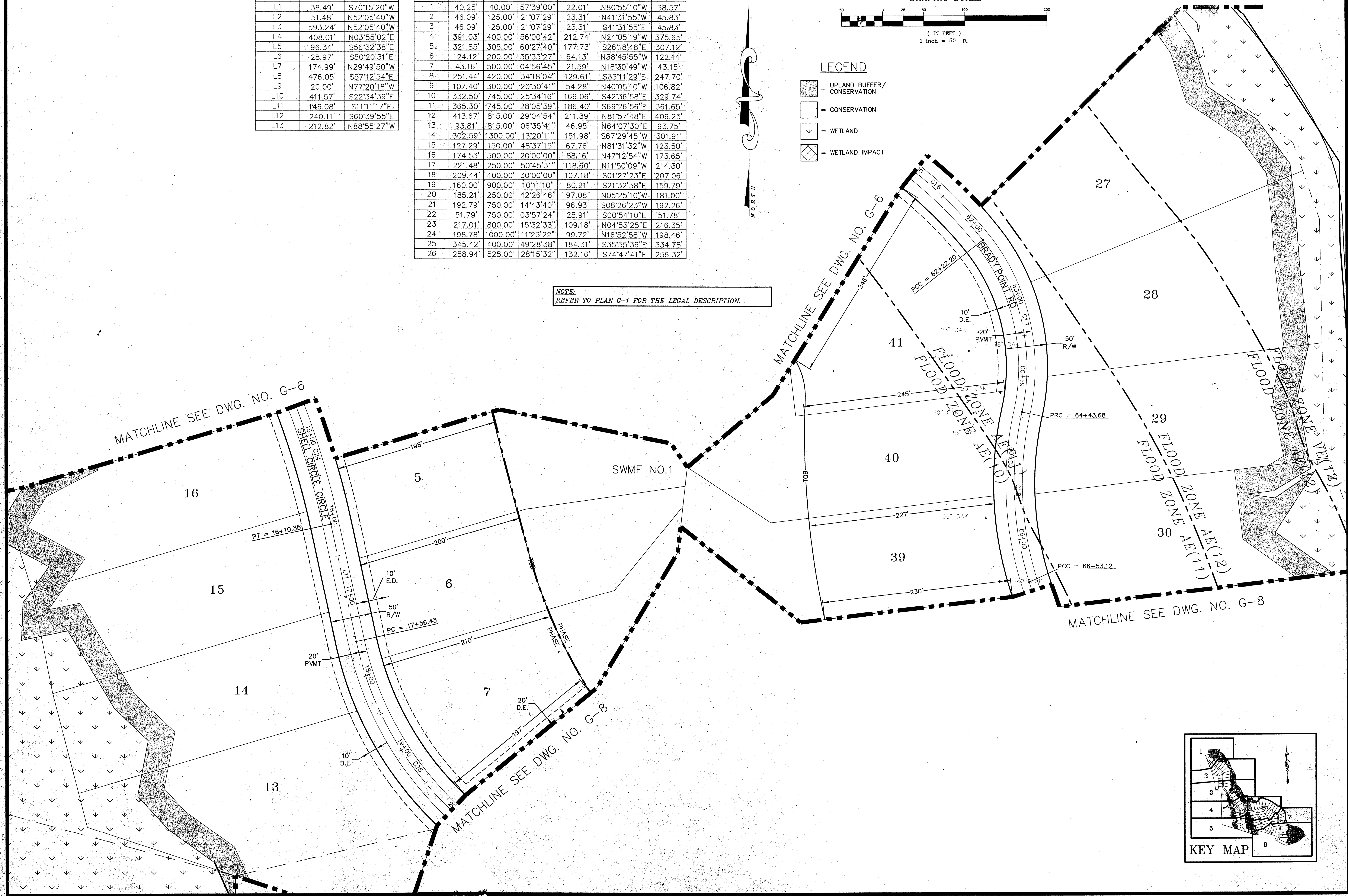
CENTERLINE CURVE TABLE						
CURVE	LENGTH	RADIUS	DELTA	TANGENT	CHORD DIR.	CHORD
1	40.25'	40.00'	57°39'00"	22.01'	N80°55'10"W	38.57'
2	46.09'	125.00'	21°07'29"	23.31'	N41°31'55"W	45.83'
3	46.09'	125.00'	21°07'29"	23.31'	S41°31'55"E	45.83'
4	391.03'	400.00'	56°00'42"	212.74'	N24°05'19"W	375.65'
5	321.85'	305.00'	60°27'40"	177.73'	S26°18'48"E	307.12'
6	124.12'	200.00'	35°33'27"	64.13'	N38°45'55"W	122.14'
7	43.16'	500.00'	04°56'45"	21.59'	N18°30'49"W	43.15'
8	251.44'	420.00'	34°18'04"	129.61'	S33°11'29"E	247.70'
9	107.40'	300.00'	20°30'41"	54.28'	N40°05'10"W	106.82'
10	332.50'	745.00'	25°34'16"	169.06'	S42°36'58"E	329.74'
11	365.30'	745.00'	28°05'39"	186.40'	S69°26'56"E	361.65'
12	413.67'	815.00'	29°04'54"	211.39'	N81°57'48"E	409.25'
13	93.81'	815.00'	06°35'41"	46.95'	N64°07'30"E	93.75'
14	302.59'	1300.00'	13°20'11"	151.98'	S67°29'45"W	301.91'
15	127.29'	150.00'	48°37'15"	67.76'	N81°31'32"W	123.50'
16	174.53'	500.00'	20°00'00"	88.16'	N47°12'54"W	173.65'
17	221.48'	250.00'	50°45'31"	118.60'	N11°50'09"W	214.30'
18	209.44'	400.00'	30°00'00"	107.18'	S01°27'23"E	207.06'
19	160.00'	900.00'	10°11'10"	80.21'	S21°32'58"E	159.79'
20	185.21'	250.00'	42°26'46"	97.08'	N05°25'10"W	181.00'
21	192.79'	750.00'	14°43'40"	96.93'	S08°26'23"W	192.26'
22	51.79'	750.00'	03°57'24"	25.91'	S00°54'10"E	51.78'
23	217.01'	800.00'	15°32'33"	109.18'	N04°53'25"E	216.35'
24	198.78'	1000.00'	11°23'22"	99.72'	N16°52'58"W	198.46'
25	345.42'	400.00'	49°28'38"	184.31'	S35°55'36"E	334.78'
26	258.94'	525.00'	28°15'32"	132.16'	S74°47'41"E	256.32'

NOTE:
REFER TO PLAN C-1 FOR THE LEGAL DESCRIPTION.



LEGEND

- = UPLAND BUFFER/ CONSERVATION
- = CONSERVATION
- = WETLAND
- = WETLAND IMPACT



REVISIONS NO. DATE 1 5/27/04	DESCRIPTION ENLARGE RD NAME
VINCENT J. DUNN REGISTERED ENGINEER NO. 39452 ENG. BUS. NO. 4846	
DESIGNED BY: PLB DRAWN BY: SS, SM, AK CHECKED BY: VJD SCALE: 1" = 50' DATE: JULY, 2003 PROJ. NO.: 0205-280	
<p>Hill, Boring, Dunn & Associates, Inc. CIVIL ENGINEERS / LAND PLANNERS 7950 BELFORT PARKWAY, SUITE 1600 JACKSONVILLE, FLORIDA 32256 904-281-1121</p>	
BRADY POINT PRESERVE FOR: BRADY POINT PRESERVE, LLC NASSAU COUNTY, FLORIDA GEOMETRY PLAN	
FILE: G-7 DWG. NO. SHEET 12 OF 40	

F:\0205-280\WORKING\280G-7P.dwg Thu Jun 10 09:07:18 2004 - SMURRIN

NOT RELEASED FOR CONSTRUCTION