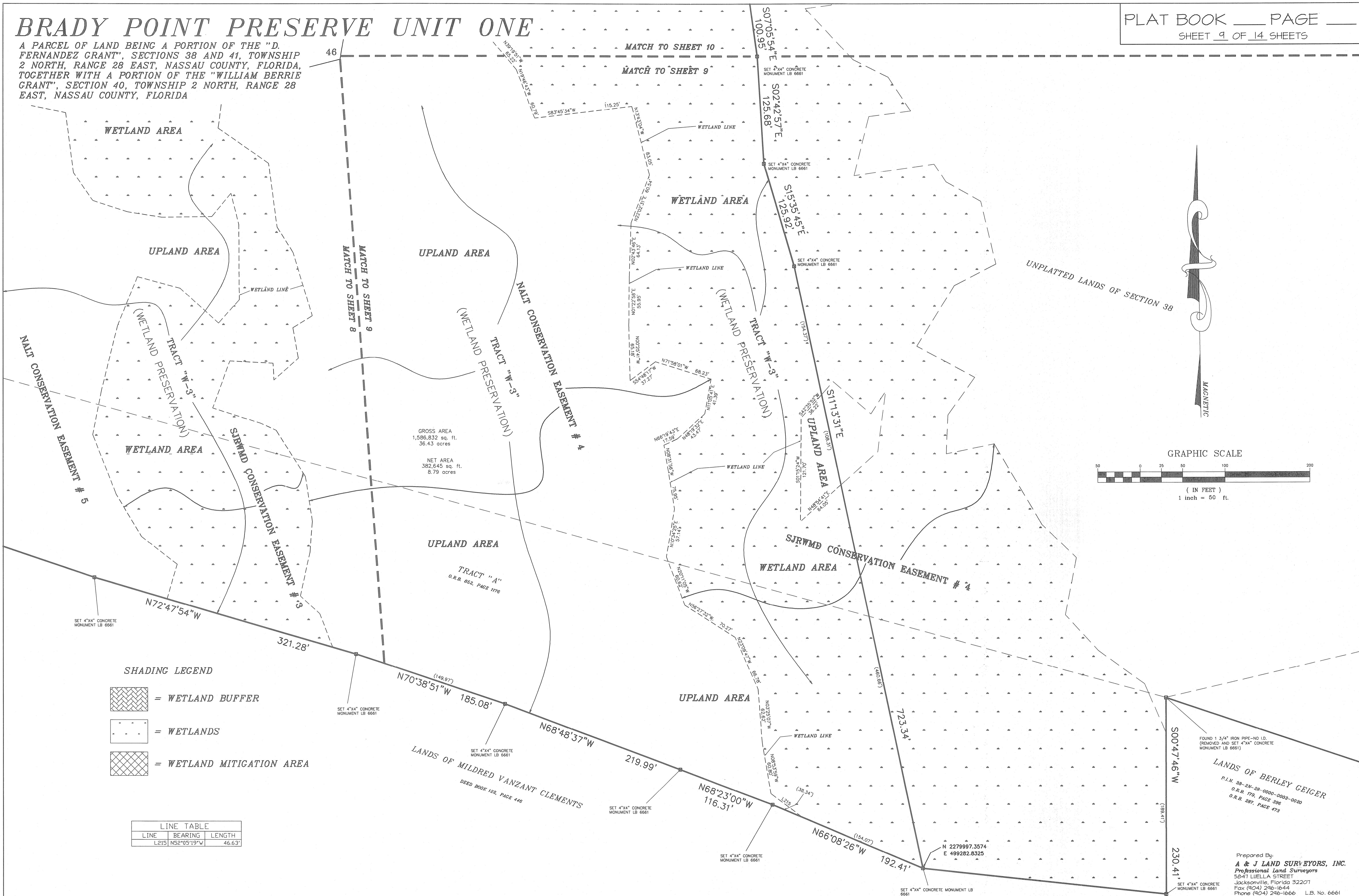


BRADY POINT PRESERVE UNIT ONE

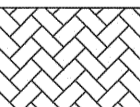
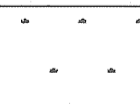

A PARCEL OF LAND BEING A PORTION OF THE "D. FERNANDEZ GRANT", SECTIONS 38 AND 41, TOWNSHIP 2 NORTH, RANGE 28 EAST, NASSAU COUNTY, FLORIDA, TOGETHER WITH A PORTION OF THE "WILLIAM BERRIE GRANT", SECTION 40, TOWNSHIP 2 NORTH, RANGE 28 EAST, NASSAU COUNTY, FLORIDA



GROSS AREA
1,596,832 sq. ft.
36.43 acres

NET AREA
382,645 sq. ft.
8.79 acres

SHADING LEGEND

-  = WETLAND BUFFER
-  = WETLANDS
-  = WETLAND MITIGATION AREA

LINE TABLE

LINE	BEARING	LENGTH
L215	N52°05'19"W	46.63'

LANDS OF BERLEY GEIGER
P.L.N. 88-2N-28-0000-0003-0020
O.R.B. 178, PAGE 396
O.R.B. 287, PAGE 478

Prepared By:
A & J LAND SURVEYORS, INC.
Professional Land Surveyors
5847 LUELLA STREET
JACKSONVILLE, FLORIDA 32207
Fax (904) 296-1644
Phone (904) 296-1666 L.B. No. 6661