

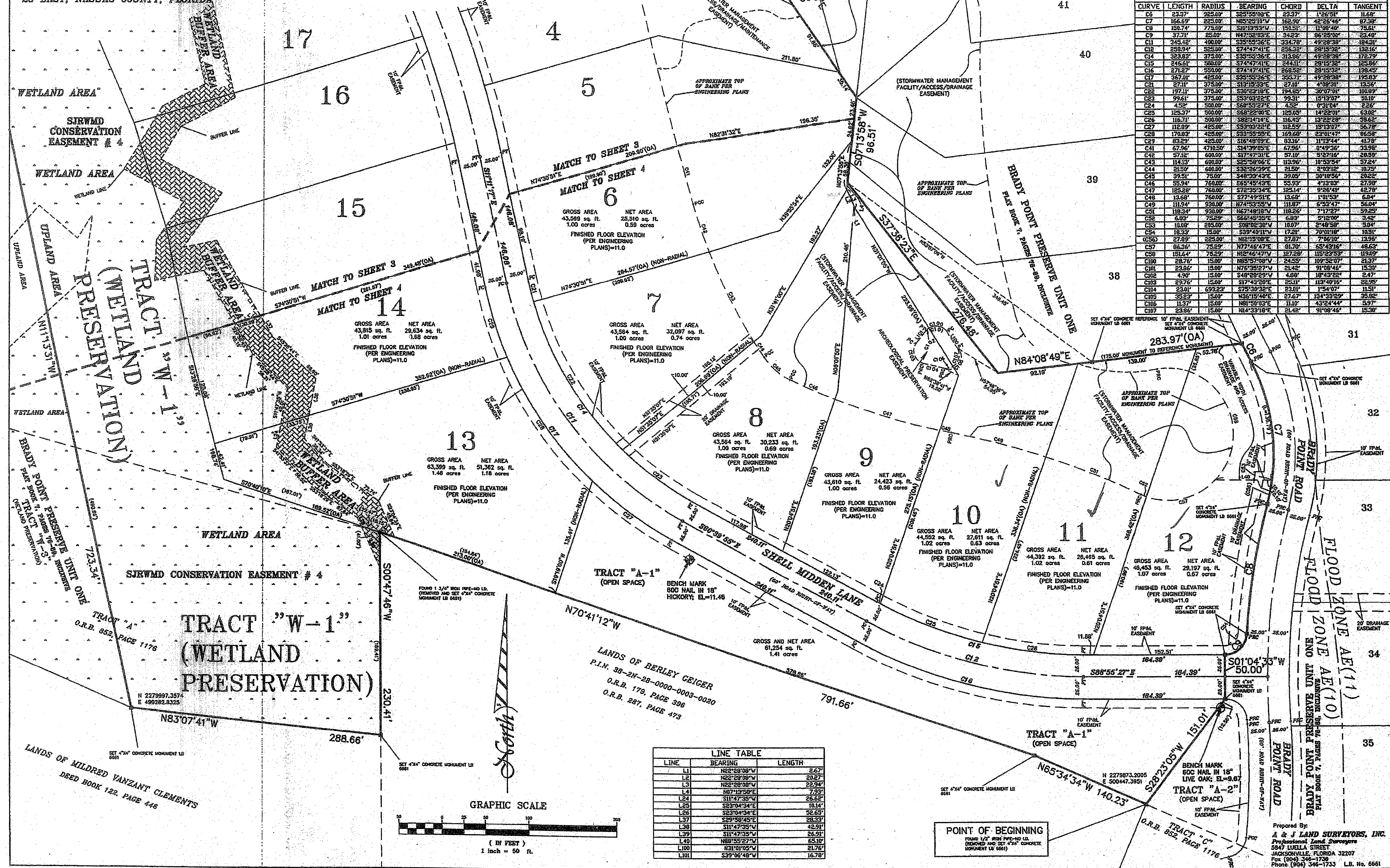
BRADY POINT PRESERVE UNIT TWO

A PARCEL OF LAND BEING A PORTION OF THE "D. FERNANDEZ GRANT", SECTION 38, TOWNSHIP 2 NORTH, RANGE 28 EAST, NASSAU COUNTY, FLORIDA

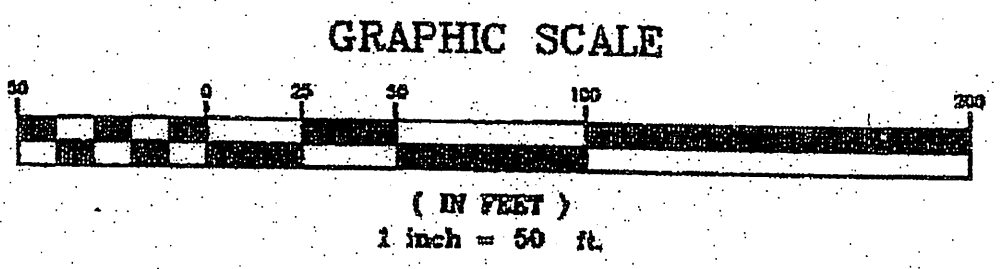
CFN # 200503687

PLAT BOOK 7 PAGE 103
SHEET 4 OF 4 SHEETS

CURVE TABLE						
CURVE	LENGTH	RADIUS	BEARING	CHORD	DELTA	TANGENT
C6	23.37'	925.00'	S85°55'06"E	23.37'	1°28'51"	11.66'
C7	166.59'	825.00'	N85°25'10"W	166.59'	42°28'46"	87.30'
C8	139.14'	725.00'	S131°33'34"E	139.14'	111°08'40"	73.81'
C9	37.71'	25.00'	N47°58'03"E	34.23'	86°25'00"	23.48'
C10	345.42'	400.00'	S35°55'26"E	334.78'	49°28'38"	184.31'
C12	289.94'	525.00'	S74°47'41"E	256.32'	28°15'32"	132.16'
C14	323.83'	375.00'	S35°55'36"E	313.66'	49°28'38"	172.79'
C15	246.61'	500.00'	S74°47'41"E	244.11'	28°15'32"	123.86'
C16	271.27'	550.00'	S74°47'41"E	266.52'	28°15'32"	138.45'
C17	367.01'	485.00'	S35°55'36"E	355.71'	49°28'38"	193.83'
C21	271.11'	375.00'	S131°33'34"E	271.01'	49°28'38"	135.51'
C22	197.11'	375.00'	S30°22'18"E	194.65'	30°07'00"	100.69'
C23	99.61'	375.00'	S33°03'22"E	99.31'	15°13'07"	50.10'
C24	4.52'	500.00'	S60°55'27"E	4.52'	0°31'04"	2.26'
C25	125.37'	500.00'	S68°22'00"E	125.03'	14°22'00"	63.02'
C26	116.71'	500.00'	S82°14'14"E	116.43'	13°22'28"	58.62'
C27	112.39'	425.00'	S35°09'22"E	112.53'	15°13'07"	56.78'
C28	170.23'	425.00'	S33°55'56"E	170.23'	23°01'47"	85.53'
C29	83.28'	425.00'	S16°46'09"E	83.16'	11°13'44"	41.78'
C41	67.96'	4710.50'	S14°38'05"E	67.96'	0°49'36"	33.58'
C42	57.18'	600.00'	S17°47'31"E	57.10'	5°27'16"	28.58'
C43	114.33'	600.00'	S25°58'06"E	113.95'	10°53'54"	57.24'
C44	21.50'	600.00'	S32°26'39"E	21.50'	2°03'12"	10.75'
C45	39.51'	75.00'	S48°23'43"E	39.55'	30°10'56"	20.22'
C46	55.94'	750.00'	S65°45'43"E	55.93'	4°51'05"	27.95'
C47	125.28'	750.00'	S32°35'34"E	125.11'	4°28'47"	62.78'
C48	33.68'	750.00'	S77°49'51"E	33.68'	1°01'53"	16.84'
C49	111.94'	930.00'	N74°53'55"W	111.87'	6°53'47"	56.04'
C51	118.34'	930.00'	N67°48'18"W	118.26'	7°17'27"	59.25'
C52	6.83'	75.00'	S66°45'25"E	6.83'	5°12'00"	3.42'
C53	10.08'	205.00'	S08°02'30"W	10.07'	2°48'56"	5.04'
C54	18.23'	15.00'	S39°40'11"W	17.21'	70°00'16"	10.51'
C55	27.82'	225.00'	N32°08'56"E	27.82'	23°01'47"	13.93'
C57	125.28'	15.00'	N77°46'47"E	125.28'	43°39'16"	64.63'
C58	151.64'	75.00'	N12°46'47"E	151.72'	15°22'53"	119.69'
C100	28.76'	15.00'	N85°57'08"E	24.55'	109°52'07"	21.37'
C101	23.86'	15.00'	N76°35'27"E	21.42'	91°08'46"	15.30'
C102	4.90'	15.00'	S48°28'29"W	4.88'	18°43'22"	2.47'
C103	29.76'	15.00'	S17°43'20"E	25.11'	113°40'16"	22.95'
C104	23.01'	693.22'	S75°30'32"E	23.01'	1°54'07"	11.51'
C105	35.25'	15.00'	N36°15'48"E	27.42'	184°33'28"	35.82'
C106	11.37'	15.00'	N81°50'33"E	11.10'	43°24'44"	5.97'
C107	23.85'	15.00'	N14°33'16"E	21.42'	91°08'46"	15.30'



LINE TABLE		
LINE	BEARING	LENGTH
L1	N22°28'08"W	2.67'
L2	N22°28'08"W	20.27'
L3	N22°28'08"W	22.94'
L4	N07°13'58"E	7.93'
L5	S11°47'35"W	26.55'
L6	S23°04'34"E	18.14'
L7	S23°04'34"E	52.63'
L8	S29°58'45"E	28.33'
L9	S11°47'35"W	42.91'
L10	N88°55'27"E	65.10'
L11	N31°01'05"W	21.76'
L12	S39°06'49"W	16.78'



POINT OF BEGINNING
FOUND 1/2" IRON NAIL IN 18" LIVE OAK SET 4" CONCRETE MONUMENT LB 6661

Prepared By:
A & J LAND SURVEYORS, INC.
Professional Land Surveyors
5847 LURELL STREET
JACKSONVILLE, FLORIDA 32207
Fax (904) 346-1738
Phone (904) 346-1733 LB. No. 6661