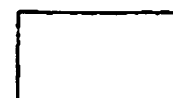
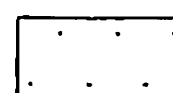



# BRADY POINT PRESERVE UNIT ONE

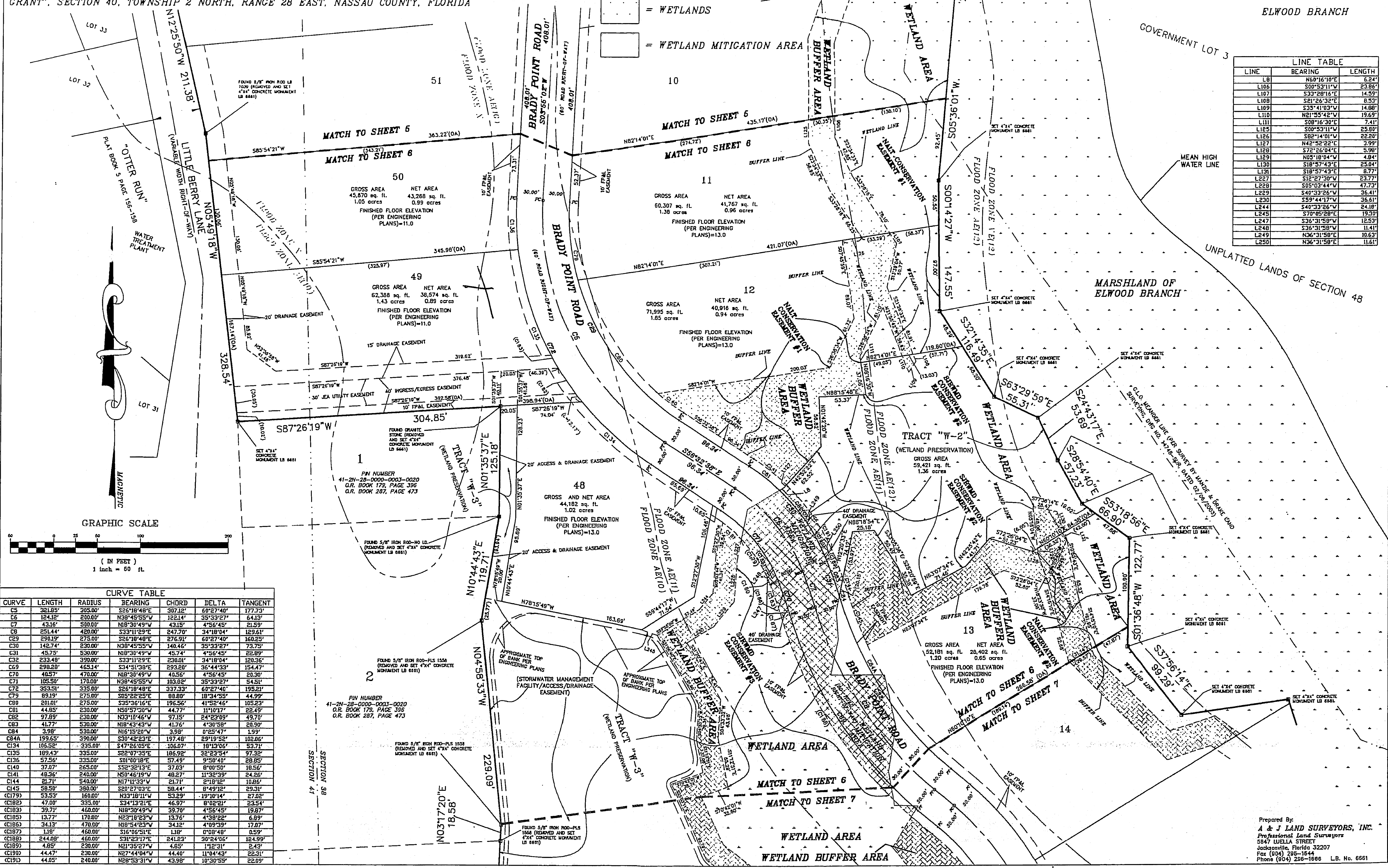
A PARCEL OF LAND BEING A PORTION OF THE "D. FERNANDEZ GRANT", SECTIONS 38 AND 41, TOWNSHIP 2 NORTH, RANGE 28 EAST, NASSAU COUNTY, FLORIDA, TOGETHER WITH A PORTION OF THE "WILLIAM BERRIE GRANT", SECTION 40, TOWNSHIP 2 NORTH, RANGE 28 EAST, NASSAU COUNTY, FLORIDA

### SHADING LEGEND

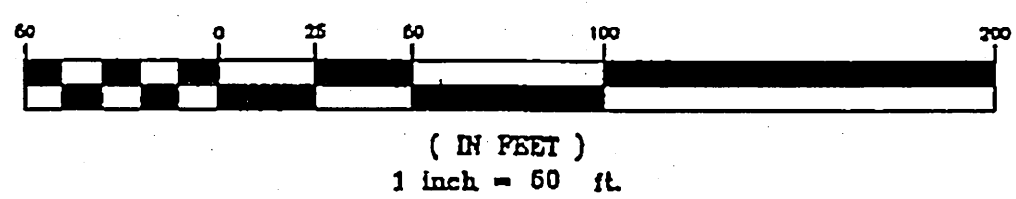
-  = WETLAND BUFFER
-  = WETLANDS
-  = WETLAND MITIGATION AREA

ELWOOD BRANCH

LINE	BEARING	LENGTH
L8	N60°16'10"E	6.24'
L106	S00°53'11"W	23.86'
L107	S32°28'16"E	14.59'
L108	S81°26'32"E	8.53'
L109	S35°11'03"W	14.88'
L110	N21°55'42"W	19.69'
L111	S08°16'30"E	7.41'
L125	S00°53'11"W	25.80'
L126	S82°14'01"W	22.20'
L127	N42°52'22"E	3.99'
L128	S72°26'04"E	5.98'
L129	N05°18'04"W	4.84'
L130	S18°57'43"E	25.04'
L131	S19°57'43"E	8.77'
L227	S12°27'30"W	23.77'
L228	S05°03'44"W	47.79'
L229	S40°33'26"W	36.41'
L230	S59°44'17"W	36.61'
L244	S40°33'26"W	24.18'
L245	S70°05'28"E	19.20'
L247	S36°31'58"W	12.53'
L248	S36°31'58"W	11.41'
L249	N36°31'58"E	10.63'
L250	N36°31'58"E	11.61'



### GRAPHIC SCALE



CURVE	LENGTH	RADIUS	BEARING	CHORD	DELTA	TANGENT
C5	321.85'	305.00'	S26°18'48"E	307.12'	60°27'40"	177.73'
C6	124.12'	200.00'	N39°45'55"W	122.14'	35°33'27"	64.13'
C7	43.16'	500.00'	N18°30'49"W	43.15'	4°56'45"	21.59'
C8	251.44'	420.00'	S33°11'29"E	247.70'	34°18'04"	129.54'
C9	298.19'	275.00'	S26°18'48"E	276.91'	60°27'40"	160.25'
C10	142.74'	230.00'	N38°45'55"W	140.46'	35°33'27"	73.75'
C11	45.75'	530.00'	N18°30'49"W	45.74'	4°56'45"	22.89'
C12	233.48'	390.00'	S33°11'29"E	230.01'	34°18'04"	120.36'
C13	298.28'	465.14'	S34°51'38"E	293.20'	36°44'33"	154.47'
C14	40.57'	470.00'	N18°30'49"W	40.56'	4°56'45"	20.30'
C15	105.50'	170.00'	N38°45'55"W	103.82'	35°33'27"	54.51'
C16	353.54'	335.00'	S26°18'48"E	337.33'	60°27'40"	195.24'
C17	89.19'	275.00'	S33°11'29"E	88.80'	34°18'04"	44.59'
C18	201.01'	275.00'	S35°36'16"E	196.56'	41°52'46"	105.23'
C19	44.85'	230.00'	N50°57'30"W	44.77'	11°10'17"	22.49'
C20	97.89'	230.00'	N33°18'46"W	97.15'	24°23'09"	49.70'
C21	41.77'	530.00'	N18°43'43"W	41.76'	4°30'58"	20.90'
C22	3.98'	530.00'	N16°15'20"W	3.98'	0°25'47"	1.99'
C23	199.65'	390.00'	S30°42'23"E	197.48'	29°19'52"	102.06'
C24	106.52'	335.00'	S47°26'05"E	106.07'	19°13'06"	53.71'
C25	189.43'	335.00'	S29°17'33"E	186.26'	32°23'14"	97.32'
C26	57.56'	335.00'	S01°00'18"E	57.49'	9°50'40"	28.85'
C27	37.07'	265.00'	S52°32'13"E	37.03'	8°00'50"	18.56'
C28	48.36'	240.00'	N50°46'19"W	48.27'	11°32'39"	24.26'
C29	21.71'	540.00'	N17°11'33"W	21.71'	2°18'12"	10.85'
C30	58.50'	380.00'	S20°27'03"E	58.44'	8°49'12"	29.31'
C31	53.53'	160.00'	N33°18'11"W	53.29'	19°10'14"	27.02'
C32	47.00'	335.00'	S34°13'21"E	46.97'	8°02'21"	23.54'
C33	39.71'	460.00'	N18°30'49"W	39.70'	4°56'45"	19.87'
C34	13.77'	170.00'	N23°10'31"E	13.76'	4°38'22"	6.89'
C35	34.13'	470.00'	N19°54'23"W	34.12'	4°09'39"	17.07'
C36	1.16'	460.00'	S16°06'51"E	1.18'	0°08'48"	0.59'
C37	244.08'	460.00'	S31°23'17"E	241.23'	30°24'06"	124.99'
C38	4.85'	230.00'	N21°35'27"W	4.85'	1°12'31"	2.43'
C39	44.47'	230.00'	N27°44'04"W	44.40'	11°04'43"	22.31'
C40	44.05'	240.00'	N28°53'31"W	43.98'	10°30'55"	22.09'

Prepared By:  
**A & J LAND SURVEYORS, INC.**  
Professional Land Surveyors  
5547 LUILLA STREET  
JACKSONVILLE, FLORIDA 32207  
Phone (904) 295-1644  
Fax (904) 295-1666 L.B. No. 6661