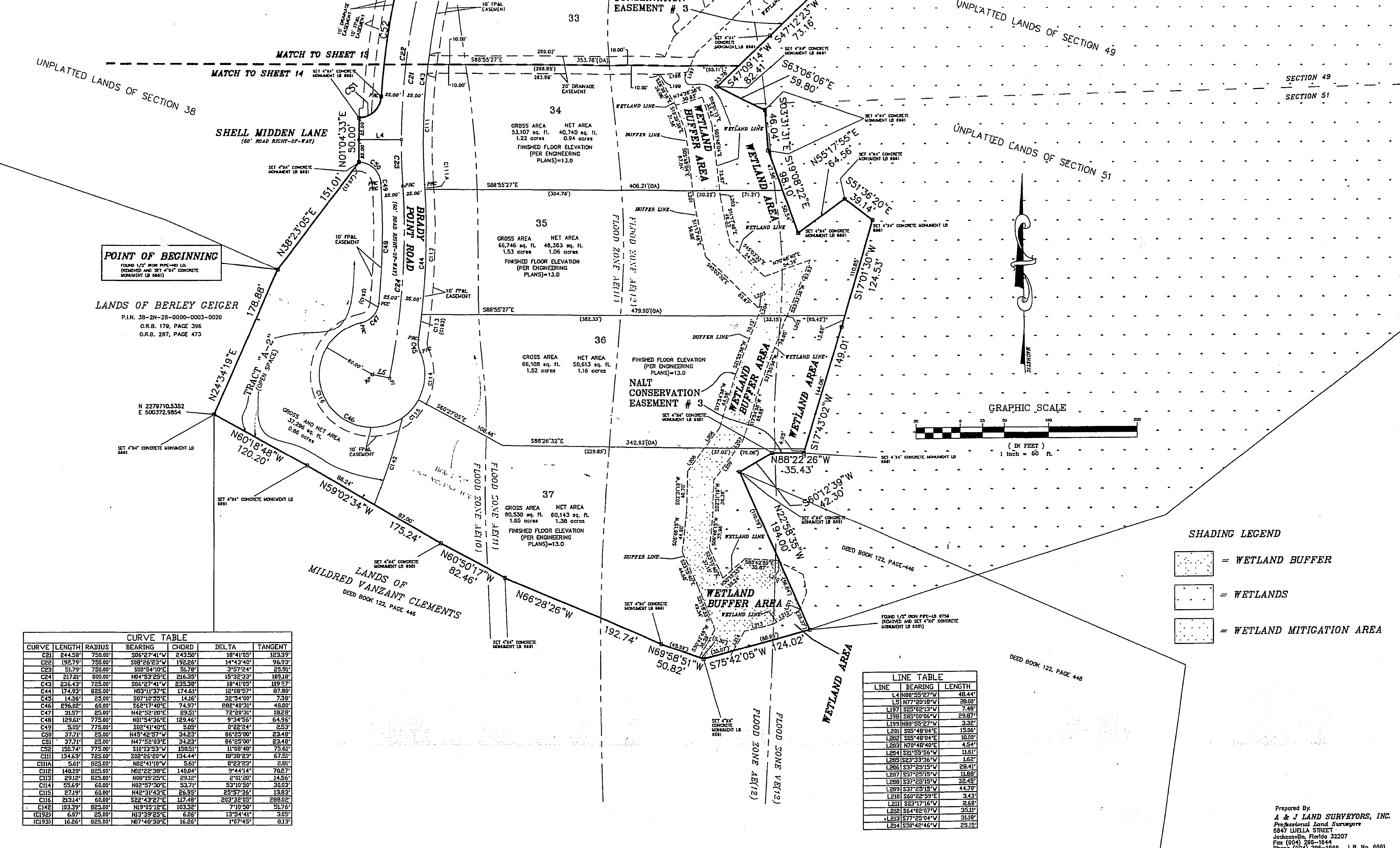


BRADY POINT PRESERVE UNIT ONE

A PARCEL OF LAND BEING A PORTION OF THE "D. FERNANDEZ GRANT", SECTIONS 38 AND 41, TOWNSHIP 2 NORTH, RANGE 28 EAST, NASSAU COUNTY, FLORIDA, TOGETHER WITH A PORTION OF THE "WILLIAM BERRIE GRANT", SECTION 40, TOWNSHIP 2 NORTH, RANGE 28 EAST, NASSAU COUNTY, FLORIDA

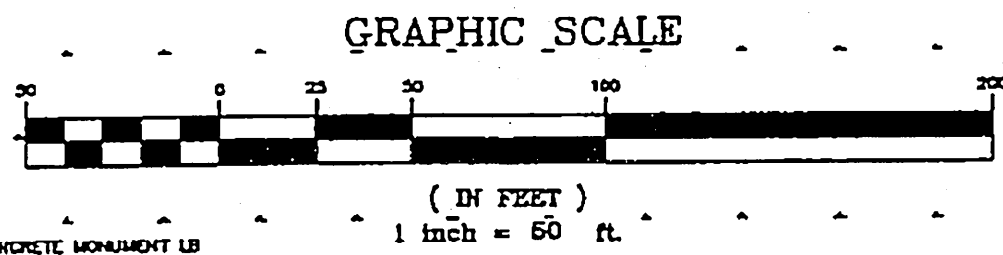


POINT OF BEGINNING
FOUND 1/2" IRON PIPE-40 LD.
(REMOVED AND SET 4"x4" CONCRETE
MONUMENT LB 6641)

LANDS OF BERLEY GEIGER
P.I.N. 38-2N-28-0000-0003-0020
O.R.B. 179, PAGE 396
O.R.B. 287, PAGE 473

N 2279710.5352
E 500372.9854

LANDS OF MILDRED VANZANT CLEMENTS
DEED BOOK 122, PAGE 446



SHADING LEGEND

- = WETLAND BUFFER
- = WETLANDS
- = WETLAND MITIGATION AREA

CURVE	LENGTH	RADIUS	BEARING	CHORD	DELTA	TANGENT
C21	244.58'	750.00'	S06°27'41"W	243.50'	18°41'05"	123.39'
C22	192.79'	750.00'	S08°26'23"W	192.26'	14°43'40"	96.93'
C23	51.91'	750.00'	S00°54'10"E	51.84'	3°57'24"	25.91'
C24	217.01'	800.00'	N04°53'25"E	216.35'	15°32'33"	109.18'
C43	236.43'	725.00'	S06°27'41"W	235.38'	18°41'05"	119.27'
C44	174.93'	825.00'	N03°11'37"E	174.61'	12°08'57"	87.80'
C45	14.36'	25.00'	S07°10'33"E	14.16'	32°54'00"	7.38'
C46	296.02'	60.00'	S62°17'40"E	74.97'	288°40'31"	48.00'
C47	31.57'	25.00'	N42°52'20"E	29.51'	78°20'31"	18.28'
C48	129.61'	775.00'	N01°54'36"E	129.46'	9°34'55"	64.36'
C49	5.05'	775.00'	S02°41'40"E	5.05'	0°22'44"	2.53'
C50	37.71'	25.00'	N45°42'57"W	34.23'	86°25'00"	23.48'
C51	37.71'	25.00'	N47°52'03"E	34.23'	86°25'00"	23.48'
C52	150.74'	775.00'	S10°13'53"W	150.51'	11°08'40"	75.61'
C111	134.63'	725.00'	S02°26'20"W	134.44'	10°38'23"	67.51'
C111A	5.61'	825.00'	N02°41'10"W	5.61'	0°23'23"	2.81'
C112	140.29'	825.00'	N02°22'38"E	140.04'	9°44'14"	70.27'
C113	291.2'	825.00'	N08°19'25"E	291.2'	2°01'20"	14.56'
C114	55.69'	60.00'	N02°57'20"E	53.71'	53°10'50"	30.03'
C115	27.19'	60.00'	N42°31'43"E	26.95'	25°57'36"	13.83'
C116	213.14'	60.00'	S22°43'27"E	117.48'	203°32'05"	288.02'
C142	103.39'	825.00'	N19°05'12"E	103.32'	7°10'50"	51.76'
(C192)	6.07'	25.00'	N13°39'25"E	6.06'	13°54'41"	3.05'
(C193)	16.26'	825.00'	N07°48'39"E	16.26'	1°07'45"	8.13'

LINE	BEARING	LENGTH
L4	N88°55'27"W	48.44'
L5	N77°20'16"W	20.00'
L97	S25°02'13"W	7.48'
L98	S85°00'06"W	29.87'
L99	N88°55'27"W	3.32'
L201	S05°48'04"E	15.06'
L202	S05°48'04"E	10.00'
L203	N70°48'40"E	4.54'
L204	S21°55'56"W	11.61'
L205	S83°33'36"W	1.62'
L206	S37°25'15"W	28.41'
L207	S37°25'15"W	11.88'
L208	S37°25'15"W	32.45'
L209	S37°25'15"W	44.70'
L210	S60°22'59"E	3.43'
L211	S23°17'16"W	2.68'
L212	S64°02'07"W	35.11'
L213	S77°25'04"W	31.19'
L214	S30°42'46"W	25.19'

Prepared By:
A & J LAND SURVEYORS, INC.
Professional Land Surveyors
6847 LUELLA STREET
Jacksonville, Florida 32207
Fax (904) 295-1644
Phone (904) 295-1666 L.B. No. 6661