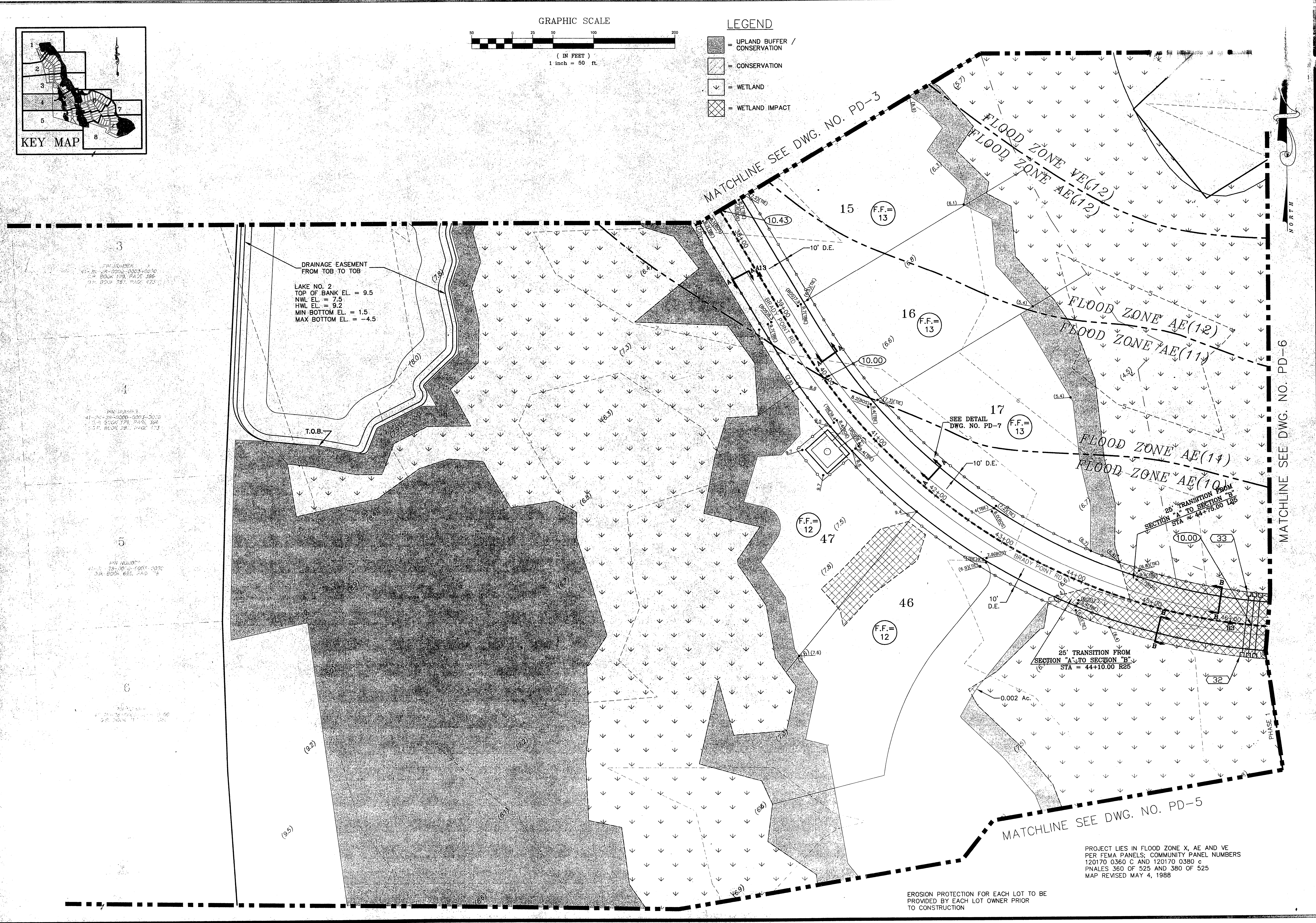


- LEGEND**
- [Stippled Area] = UPLAND BUFFER / CONSERVATION
 - [Cross-hatched Area] = CONSERVATION
 - [Downward Arrow] = WETLAND
 - [Grid Pattern] = WETLAND IMPACT



REVISIONS

NO.	DATE	DESCRIPTION
1	4/7/04	REVISED PER SURVIVO COMMENTS

DESIGNED BY: PLB
 DRAWN BY: SS, SM, AK
 CHECKED BY: VJD
 SCALE: 1" = 50'
 DATE: JULY, 2003
 PROJ. NO.: 0205-280

Hill, Boring, Dunn & Associates, Inc.
 CIVIL ENGINEERS / LAND PLANNERS
 7950 BELFORT PARKWAY, SUITE 1600
 JACKSONVILLE, FLORIDA 32256
 904-281-1121

BRADY POINT PRESERVE

FOR:
 BRADY POINT PRESERVE, LLC
 NASSAU COUNTY, FLORIDA
 PAVING AND DRAINAGE PLAN

FILE:
PD-4
 DWG. NO.

SHEET 17 OF 40

F:\0205-280\WORKING\280PD-4P.dwg Mon Apr 26 09:42:34 2004