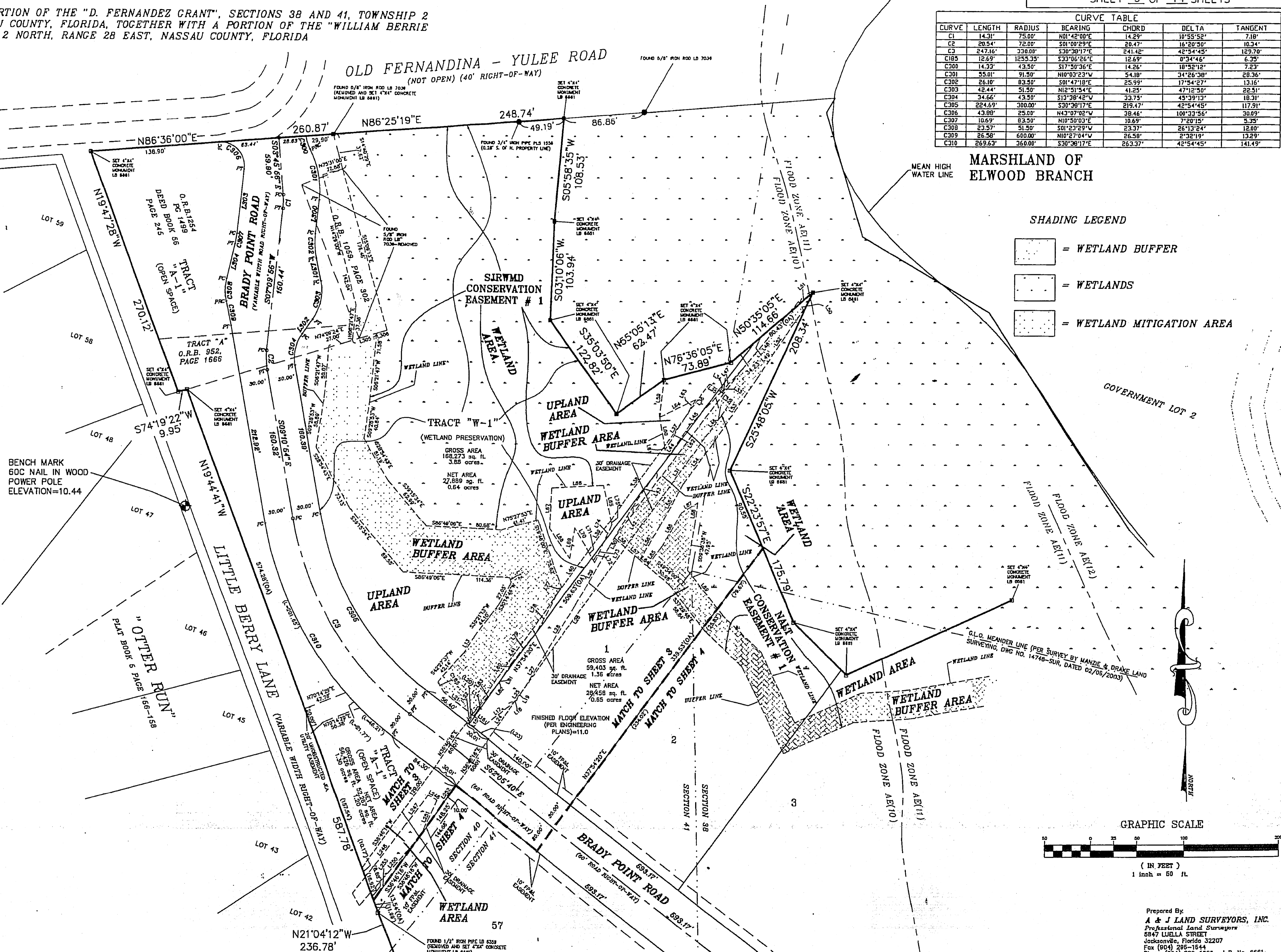


BRADY POINT PRESERVE UNIT ONE

A PARCEL OF LAND BEING A PORTION OF THE "D. FERNANDEZ GRANT", SECTIONS 38 AND 41, TOWNSHIP 2 NORTH, RANGE 28 EAST, NASSAU COUNTY, FLORIDA, TOGETHER WITH A PORTION OF THE "WILLIAM BERRIE GRANT", SECTION 40, TOWNSHIP 2 NORTH, RANGE 28 EAST, NASSAU COUNTY, FLORIDA

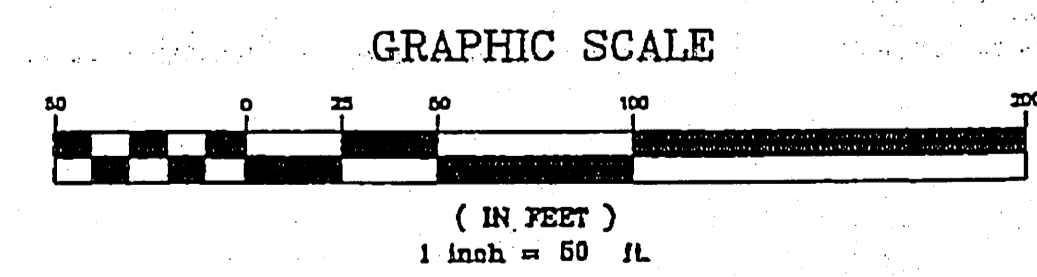
CURVE TABLE						
CURVE	LENGTH	RADIUS	BEARING	CHORD	DELTA	TANGENT
C1	14.31'	75.00'	N81°42'00"E	14.29'	10°55'52"	7.18'
C2	20.54'	72.00'	S01°00'29"E	20.47'	16°20'50"	10.34'
C3	247.16'	330.00'	S30°38'17"E	241.42'	42°34'45"	129.70'
C185	12.69'	1255.33'	S33°06'26"E	12.69'	0°34'46"	6.35'
C200	14.33'	43.50'	S17°50'36"E	14.26'	18°52'12"	7.23'
C301	55.01'	91.50'	N10°03'23"W	54.18'	34°26'38"	28.36'
C302	26.10'	83.50'	S01°47'18"E	25.99'	17°54'27"	13.16'
C303	42.44'	91.50'	N12°51'54"E	41.25'	47°12'50"	22.51'
C304	34.66'	43.50'	S13°08'42"W	33.73'	45°39'13"	18.31'
C305	224.69'	300.00'	S30°38'17"E	219.47'	42°54'45"	117.91'
C306	43.88'	25.00'	N43°07'02"W	38.46'	100°33'56"	30.09'
C307	10.69'	83.50'	N10°50'03"E	10.69'	7°20'15"	5.35'
C308	23.57'	51.50'	S01°23'29"W	23.37'	26°13'24"	12.00'
C309	26.58'	600.00'	N10°27'04"W	26.58'	2°32'19"	13.29'
C310	269.63'	360.00'	S30°38'17"E	263.37'	42°54'45"	141.49'

LINE TABLE		
LINE	BEARING	LENGTH
L201	S52°05'40"E	3.29'
L231	S52°05'40"E	26.71'
L12	S31°46'00"E	5.49'
L13	S33°15'24"W	20.18'
L14	S52°05'40"E	3.49'
L15	N37°54'20"E	10.00'
L16	S52°05'40"E	14.45'
L17	N54°20'09"E	39.96'
L18	N54°20'09"E	3.22'
L19	N32°39'55"E	13.58'
L21	S33°15'24"W	50.16'
L22	N36°44'52"E	10.00'
L24	N36°46'16"E	48.34'
L25	N36°46'16"E	16.62'
L26	N36°46'16"E	186.64'
L27	N32°39'55"E	42.96'
L28	N33°01'49"E	62.13'
L29	N30°52'52"E	74.19'
L30	N31°19'08"E	9.04'
L31	N36°46'16"E	193.77'
L32	N53°13'44"W	11.59'
L33	N52°13'44"W	3.33'
L34	N53°13'44"W	2.97'
L35	N53°13'44"W	12.10'
L36	N36°46'16"E	46.25'
L37	N36°46'16"E	33.54'
L38	N36°46'16"E	97.89'
L39	N36°46'16"E	41.02'
L40	N36°46'16"E	54.74'
L41	N36°46'21"E	159.43'
L42	N31°19'08"E	38.90'
L43	N35°46'51"E	44.54'
L44	N35°46'51"E	61.02'
L45	N44°03'05"E	21.13'
L46	N44°03'05"E	27.76'
L47	N44°03'05"E	31.39'
L48	N40°38'31"E	78.28'
L49	N50°35'05"E	45.88'
L50	S30°28'40"E	7.33'
L51	S50°35'05"E	18.18'
L52	S34°57'34"W	86.34'
L53	S34°57'34"W	84.16'
L54	S26°39'38"W	55.36'
L55	S29°49'48"W	50.90'
L56	S31°39'02"W	41.22'
L57	N49°34'00"W	20.38'
L58	N49°34'00"W	15.63'
L59	S07°12'22"W	39.79'
L60	S09°01'22"E	31.37'
L61	S09°01'22"E	4.03'
L62	N32°27'52"E	36.45'
L63	N32°27'52"E	24.18'
L64	S65°28'35"W	43.04'
L65	N11°20'08"W	37.78'
L66	S87°39'34"W	55.90'
L67	S03°37'12"W	43.10'
L68	S33°59'45"E	38.84'
L69	N10°10'39"E	33.16'
L70	S28°57'57"E	28.64'
L71	S28°57'57"E	8.41'
L72	S28°57'57"E	5.44'
L73	N25°17'30"E	22.92'
L74	N25°17'30"E	21.22'
L75	N11°20'08"W	5.16'
L77	S30°14'46"W	7.59'
L78	S30°14'46"W	46.78'
L79	S39°15'33"W	45.49'
L80	S33°15'24"W	19.28'
L81	S33°15'24"W	2.26'
L82	S42°27'37"W	2.31'
L83	S42°27'37"W	44.01'
L84	S49°34'00"W	10.03'
L85	N38°27'23"E	25.20'
L86	N31°11'31"E	42.48'
L87	N59°15'22"E	20.31'
L88	S08°39'22"W	24.35'
L89	S37°29'48"E	52.33'
L246	N57°38'10"W	10.97'
L247	S37°49'48"W	41.29'
L248	S38°44'27"W	67.00'
L250	S42°15'44"W	77.37'
L251	S26°29'20"W	48.08'
L252	S36°46'16"W	66.34'
L253	S36°46'16"W	81.78'
L300	S07°09'56"W	35.69'
L301	S10°44'51"E	24.26'
L302	S36°28'19"W	19.25'
L303	S07°09'56"W	68.24'
L304	S14°30'11"W	38.32'
L305	N74°40'19"E	26.91'
L306	N74°19'22"E	11.34'



SHADING LEGEND

- = WETLAND BUFFER
- = WETLANDS
- = WETLAND MITIGATION AREA



Prepared by:
A & J LAND SURVEYORS, INC.
Professional Land Surveyors
6847 WUDD STREET
Jacksonville, Florida 32207
Fax (904) 286-1544
Phone (904) 286-1668 L.B. No. 6661