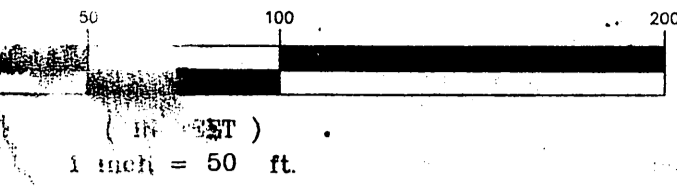


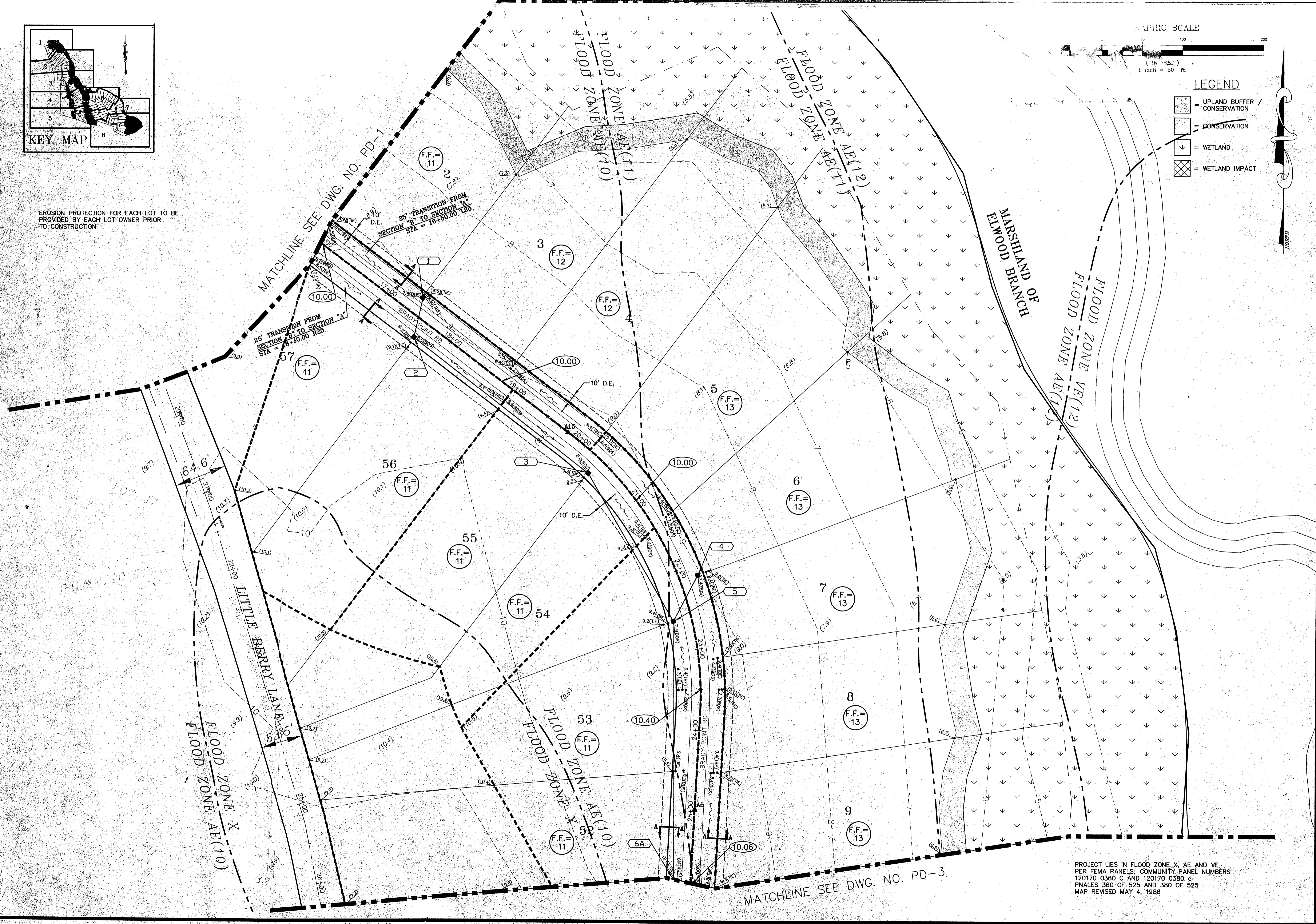
EROSION PROTECTION FOR EACH LOT TO BE PROVIDED BY EACH LOT-OWNER PRIOR TO CONSTRUCTION

GRAPHIC SCALE



LEGEND

- = UPLAND BUFFER / CONSERVATION
- = CONSERVATION
- = WETLAND
- = WETLAND IMPACT



PROJECT LIES IN FLOOD ZONE X, AE AND VE.
 PER FEMA PANELS: COMMUNITY PANEL NUMBERS
 120170 0360 C AND 120170 0380 C
 PNALES 360 OF 525 AND 380 OF 525
 MAP REVISED MAY 4, 1988

NO.	DATE	DESCRIPTION	BY
1	4/7/04	REVISED PER SURVIVOR COMMENTS	VJD

DESIGNED BY: PLB
 DRAWN BY: SS, SM, AK
 CHECKED BY: VJD
 SCALE: 1" = 50'
 DATE: JULY, 2003
 PROJ. NO.: 0205-280

Hill, Boring, Dunn & Associates, Inc.
 CIVIL ENGINEERS / LAND PLANNERS
 7950 BELFORT PARKWAY, SUITE 1600
 JACKSONVILLE, FLORIDA 32256
 904-281-1121

BRADY POINT PRESERVE
 FOR:
BRADY POINT PRESERVE, LLC
 MASSAUI COUNTY, FLORIDA
 PAVING AND DRAINAGE PLAN
 FOR CONSTRUCTION

FILE:
PD-2
 DWG. NO.
 SHEET 15 OF 4

W:\052801\WORKING\2801\2801.DWG Sat Apr 24 12:34:00 2004 JHEM