



BP0471935

PGS

7

Upon recording, return to:
J. Stanley Claypoole, P.A.
2155 Northpark Lane
North Charleston, SC 29406

SUPPLEMENT TO

STATE OF SOUTH CAROLINA) DECLARATION OF COVENANTS,
) **CONDITIONS AND RESTRICTIONS FOR**
COUNTY OF CHARLESTON) SWYGERT’S LANDING PHASE 3

THIS SUPPLEMENT TO DECLARATION OF COVENANTS, CONDITIONS, RESTRICTIONS AND EASEMENTS (the “Declaration”) made on the date hereinafter set forth by CAM Management, LLC (together with its successors and assigns, “Developer”), having a mailing address of 108 West Timonium Road, Suite 300, Timonium, MD 21093

WITNESSETH

WHEREAS, Developer has caused to be created a Neighborhood District subdivision known as Swygert’s Landing (hereinafter referred to as the “Subdivision”) pursuant to the plat entitled “**PLAT OF ABANDONMENT OF LOTS 1 THROUGH 8 TO CREATE TMS #312-00-00-050 (201.12 ac.) AND TMS #312-00-00-050 (171.02 ac.) RESIDUAL (Owned by: CAM Management, LLC)**,” prepared by Thomas & Hutton Engineering Co , dated June 1, 2007 and recorded at the RMC Office for Charleston County in Plat Book EK at pages 954-958 on August 23, 2007, and

WHEREAS, the “Declaration of Covenants, Conditions and Restrictions for Swygert’s Landing” (hereinafter referred to as the “Covenants and Restrictions”) dated September 16, 2010 was recorded in the Charleston County RMC Office in Book 0144, page 369 (hereinafter referred to as the “Covenants and Restrictions”), and amended by the “Amendment to Declaration of Covenants, Conditions and Restrictions for Swygert’s Landing Property Owners Association, Inc ” dated October 9, 2014 and recorded November 3, 2014 in the Charleston County RMC Office in Book 0144, page 369 (hereinafter referred to as the “Amendment to Covenants and Restrictions”). and

WHEREAS, by Declaration of Covenants, Conditions and Restrictions for Swygert’s Landing, Phase 2A, dated May 16, 2013 and recorded May 17, 2013 in the Charleston County RMC Office in Book 0331, page 714, Developer subjected Phase 2A, as shown on that certain plat entitled “**FINAL SUBDIVISION PLAT OF PHASE 2A SWYGERT’S LANDING**” prepared by Thomas & Hutton, dated November 20, 2012 and recorded in the Charleston County RMC Office on December 19, 2010 in Book L12, pages 0365, 0366, and 0367, to the terms and conditions contained in the existing Covenants and Restrictions recorded in the Charleston County RMC Office in Book 0144, page 369, and

WHEREAS, Article I, Section 11 of the Covenants and Restrictions provides for the further inclusion of “such other property as may hereafter be made part of these Declarations”, and

NOTES

1. THIS PLAN IS A PRELIMINARY PLAN AND IS SUBJECT TO THE APPROVAL OF THE CITY OF CHARLOTTE AND THE NORTH CAROLINA DEPARTMENT OF TRANSPORTATION AND PUBLIC SAFETY.
2. THE CITY OF CHARLOTTE HAS REVIEWED THIS PLAN AND HAS APPROVED IT FOR THE CITY OF CHARLOTTE.
3. THE NORTH CAROLINA DEPARTMENT OF TRANSPORTATION AND PUBLIC SAFETY HAS REVIEWED THIS PLAN AND HAS APPROVED IT FOR THE NORTH CAROLINA DEPARTMENT OF TRANSPORTATION AND PUBLIC SAFETY.
4. THE CITY OF CHARLOTTE HAS REVIEWED THIS PLAN AND HAS APPROVED IT FOR THE CITY OF CHARLOTTE.
5. THE NORTH CAROLINA DEPARTMENT OF TRANSPORTATION AND PUBLIC SAFETY HAS REVIEWED THIS PLAN AND HAS APPROVED IT FOR THE NORTH CAROLINA DEPARTMENT OF TRANSPORTATION AND PUBLIC SAFETY.
6. THE CITY OF CHARLOTTE HAS REVIEWED THIS PLAN AND HAS APPROVED IT FOR THE CITY OF CHARLOTTE.
7. THE NORTH CAROLINA DEPARTMENT OF TRANSPORTATION AND PUBLIC SAFETY HAS REVIEWED THIS PLAN AND HAS APPROVED IT FOR THE NORTH CAROLINA DEPARTMENT OF TRANSPORTATION AND PUBLIC SAFETY.
8. THE CITY OF CHARLOTTE HAS REVIEWED THIS PLAN AND HAS APPROVED IT FOR THE CITY OF CHARLOTTE.
9. THE NORTH CAROLINA DEPARTMENT OF TRANSPORTATION AND PUBLIC SAFETY HAS REVIEWED THIS PLAN AND HAS APPROVED IT FOR THE NORTH CAROLINA DEPARTMENT OF TRANSPORTATION AND PUBLIC SAFETY.
10. THE CITY OF CHARLOTTE HAS REVIEWED THIS PLAN AND HAS APPROVED IT FOR THE CITY OF CHARLOTTE.
11. THE NORTH CAROLINA DEPARTMENT OF TRANSPORTATION AND PUBLIC SAFETY HAS REVIEWED THIS PLAN AND HAS APPROVED IT FOR THE NORTH CAROLINA DEPARTMENT OF TRANSPORTATION AND PUBLIC SAFETY.
12. THE CITY OF CHARLOTTE HAS REVIEWED THIS PLAN AND HAS APPROVED IT FOR THE CITY OF CHARLOTTE.
13. THE NORTH CAROLINA DEPARTMENT OF TRANSPORTATION AND PUBLIC SAFETY HAS REVIEWED THIS PLAN AND HAS APPROVED IT FOR THE NORTH CAROLINA DEPARTMENT OF TRANSPORTATION AND PUBLIC SAFETY.
14. THE CITY OF CHARLOTTE HAS REVIEWED THIS PLAN AND HAS APPROVED IT FOR THE CITY OF CHARLOTTE.
15. THE NORTH CAROLINA DEPARTMENT OF TRANSPORTATION AND PUBLIC SAFETY HAS REVIEWED THIS PLAN AND HAS APPROVED IT FOR THE NORTH CAROLINA DEPARTMENT OF TRANSPORTATION AND PUBLIC SAFETY.
16. THE CITY OF CHARLOTTE HAS REVIEWED THIS PLAN AND HAS APPROVED IT FOR THE CITY OF CHARLOTTE.
17. THE NORTH CAROLINA DEPARTMENT OF TRANSPORTATION AND PUBLIC SAFETY HAS REVIEWED THIS PLAN AND HAS APPROVED IT FOR THE NORTH CAROLINA DEPARTMENT OF TRANSPORTATION AND PUBLIC SAFETY.
18. THE CITY OF CHARLOTTE HAS REVIEWED THIS PLAN AND HAS APPROVED IT FOR THE CITY OF CHARLOTTE.
19. THE NORTH CAROLINA DEPARTMENT OF TRANSPORTATION AND PUBLIC SAFETY HAS REVIEWED THIS PLAN AND HAS APPROVED IT FOR THE NORTH CAROLINA DEPARTMENT OF TRANSPORTATION AND PUBLIC SAFETY.
20. THE CITY OF CHARLOTTE HAS REVIEWED THIS PLAN AND HAS APPROVED IT FOR THE CITY OF CHARLOTTE.

LEGEND

- 1. PHASE 1
- 2. PHASE 2A
- 3. PHASE 2B
- 4. PHASE 3
- 5. PHASE 4
- 6. FUTURE DEVELOPMENT
- 7. RIVER ROAD
- 8. MOONBAY DR
- 9. ORTEGA DR
- 10. WITCHELL ST
- 11. CLAYBROOK ST
- 12. MOONBAY DR
- 13. PHASE 1
- 14. PHASE 2A
- 15. PHASE 2B
- 16. PHASE 3
- 17. PHASE 4
- 18. FUTURE DEVELOPMENT
- 19. RIVER ROAD
- 20. MOONBAY DR
- 21. ORTEGA DR
- 22. WITCHELL ST
- 23. CLAYBROOK ST
- 24. MOONBAY DR
- 25. PHASE 1
- 26. PHASE 2A
- 27. PHASE 2B
- 28. PHASE 3
- 29. PHASE 4
- 30. FUTURE DEVELOPMENT
- 31. RIVER ROAD
- 32. MOONBAY DR
- 33. ORTEGA DR
- 34. WITCHELL ST
- 35. CLAYBROOK ST
- 36. MOONBAY DR
- 37. PHASE 1
- 38. PHASE 2A
- 39. PHASE 2B
- 40. PHASE 3
- 41. PHASE 4
- 42. FUTURE DEVELOPMENT
- 43. RIVER ROAD
- 44. MOONBAY DR
- 45. ORTEGA DR
- 46. WITCHELL ST
- 47. CLAYBROOK ST
- 48. MOONBAY DR
- 49. PHASE 1
- 50. PHASE 2A
- 51. PHASE 2B
- 52. PHASE 3
- 53. PHASE 4
- 54. FUTURE DEVELOPMENT
- 55. RIVER ROAD
- 56. MOONBAY DR
- 57. ORTEGA DR
- 58. WITCHELL ST
- 59. CLAYBROOK ST
- 60. MOONBAY DR
- 61. PHASE 1
- 62. PHASE 2A
- 63. PHASE 2B
- 64. PHASE 3
- 65. PHASE 4
- 66. FUTURE DEVELOPMENT
- 67. RIVER ROAD
- 68. MOONBAY DR
- 69. ORTEGA DR
- 70. WITCHELL ST
- 71. CLAYBROOK ST
- 72. MOONBAY DR
- 73. PHASE 1
- 74. PHASE 2A
- 75. PHASE 2B
- 76. PHASE 3
- 77. PHASE 4
- 78. FUTURE DEVELOPMENT
- 79. RIVER ROAD
- 80. MOONBAY DR
- 81. ORTEGA DR
- 82. WITCHELL ST
- 83. CLAYBROOK ST
- 84. MOONBAY DR
- 85. PHASE 1
- 86. PHASE 2A
- 87. PHASE 2B
- 88. PHASE 3
- 89. PHASE 4
- 90. FUTURE DEVELOPMENT
- 91. RIVER ROAD
- 92. MOONBAY DR
- 93. ORTEGA DR
- 94. WITCHELL ST
- 95. CLAYBROOK ST
- 96. MOONBAY DR
- 97. PHASE 1
- 98. PHASE 2A
- 99. PHASE 2B
- 100. PHASE 3
- 101. PHASE 4
- 102. FUTURE DEVELOPMENT
- 103. RIVER ROAD
- 104. MOONBAY DR
- 105. ORTEGA DR
- 106. WITCHELL ST
- 107. CLAYBROOK ST
- 108. MOONBAY DR
- 109. PHASE 1
- 110. PHASE 2A
- 111. PHASE 2B
- 112. PHASE 3
- 113. PHASE 4
- 114. FUTURE DEVELOPMENT
- 115. RIVER ROAD
- 116. MOONBAY DR
- 117. ORTEGA DR
- 118. WITCHELL ST
- 119. CLAYBROOK ST
- 120. MOONBAY DR
- 121. PHASE 1
- 122. PHASE 2A
- 123. PHASE 2B
- 124. PHASE 3
- 125. PHASE 4
- 126. FUTURE DEVELOPMENT
- 127. RIVER ROAD
- 128. MOONBAY DR
- 129. ORTEGA DR
- 130. WITCHELL ST
- 131. CLAYBROOK ST
- 132. MOONBAY DR
- 133. PHASE 1
- 134. PHASE 2A
- 135. PHASE 2B
- 136. PHASE 3
- 137. PHASE 4
- 138. FUTURE DEVELOPMENT
- 139. RIVER ROAD
- 140. MOONBAY DR
- 141. ORTEGA DR
- 142. WITCHELL ST
- 143. CLAYBROOK ST
- 144. MOONBAY DR
- 145. PHASE 1
- 146. PHASE 2A
- 147. PHASE 2B
- 148. PHASE 3
- 149. PHASE 4
- 150. FUTURE DEVELOPMENT
- 151. RIVER ROAD
- 152. MOONBAY DR
- 153. ORTEGA DR
- 154. WITCHELL ST
- 155. CLAYBROOK ST
- 156. MOONBAY DR
- 157. PHASE 1
- 158. PHASE 2A
- 159. PHASE 2B
- 160. PHASE 3
- 161. PHASE 4
- 162. FUTURE DEVELOPMENT
- 163. RIVER ROAD
- 164. MOONBAY DR
- 165. ORTEGA DR
- 166. WITCHELL ST
- 167. CLAYBROOK ST
- 168. MOONBAY DR
- 169. PHASE 1
- 170. PHASE 2A
- 171. PHASE 2B
- 172. PHASE 3
- 173. PHASE 4
- 174. FUTURE DEVELOPMENT
- 175. RIVER ROAD
- 176. MOONBAY DR
- 177. ORTEGA DR
- 178. WITCHELL ST
- 179. CLAYBROOK ST
- 180. MOONBAY DR
- 181. PHASE 1
- 182. PHASE 2A
- 183. PHASE 2B
- 184. PHASE 3
- 185. PHASE 4
- 186. FUTURE DEVELOPMENT
- 187. RIVER ROAD
- 188. MOONBAY DR
- 189. ORTEGA DR
- 190. WITCHELL ST
- 191. CLAYBROOK ST
- 192. MOONBAY DR
- 193. PHASE 1
- 194. PHASE 2A
- 195. PHASE 2B
- 196. PHASE 3
- 197. PHASE 4
- 198. FUTURE DEVELOPMENT
- 199. RIVER ROAD
- 200. MOONBAY DR
- 201. ORTEGA DR
- 202. WITCHELL ST
- 203. CLAYBROOK ST
- 204. MOONBAY DR
- 205. PHASE 1
- 206. PHASE 2A
- 207. PHASE 2B
- 208. PHASE 3
- 209. PHASE 4
- 210. FUTURE DEVELOPMENT
- 211. RIVER ROAD
- 212. MOONBAY DR
- 213. ORTEGA DR
- 214. WITCHELL ST
- 215. CLAYBROOK ST
- 216. MOONBAY DR
- 217. PHASE 1
- 218. PHASE 2A
- 219. PHASE 2B
- 220. PHASE 3
- 221. PHASE 4
- 222. FUTURE DEVELOPMENT
- 223. RIVER ROAD
- 224. MOONBAY DR
- 225. ORTEGA DR
- 226. WITCHELL ST
- 227. CLAYBROOK ST
- 228. MOONBAY DR
- 229. PHASE 1
- 230. PHASE 2A
- 231. PHASE 2B
- 232. PHASE 3
- 233. PHASE 4
- 234. FUTURE DEVELOPMENT
- 235. RIVER ROAD
- 236. MOONBAY DR
- 237. ORTEGA DR
- 238. WITCHELL ST
- 239. CLAYBROOK ST
- 240. MOONBAY DR
- 241. PHASE 1
- 242. PHASE 2A
- 243. PHASE 2B
- 244. PHASE 3
- 245. PHASE 4
- 246. FUTURE DEVELOPMENT
- 247. RIVER ROAD
- 248. MOONBAY DR
- 249. ORTEGA DR
- 250. WITCHELL ST
- 251. CLAYBROOK ST
- 252. MOONBAY DR
- 253. PHASE 1
- 254. PHASE 2A
- 255. PHASE 2B
- 256. PHASE 3
- 257. PHASE 4
- 258. FUTURE DEVELOPMENT
- 259. RIVER ROAD
- 260. MOONBAY DR
- 261. ORTEGA DR
- 262. WITCHELL ST
- 263. CLAYBROOK ST
- 264. MOONBAY DR
- 265. PHASE 1
- 266. PHASE 2A
- 267. PHASE 2B
- 268. PHASE 3
- 269. PHASE 4
- 270. FUTURE DEVELOPMENT
- 271. RIVER ROAD
- 272. MOONBAY DR
- 273. ORTEGA DR
- 274. WITCHELL ST
- 275. CLAYBROOK ST
- 276. MOONBAY DR
- 277. PHASE 1
- 278. PHASE 2A
- 279. PHASE 2B
- 280. PHASE 3
- 281. PHASE 4
- 282. FUTURE DEVELOPMENT
- 283. RIVER ROAD
- 284. MOONBAY DR
- 285. ORTEGA DR
- 286. WITCHELL ST
- 287. CLAYBROOK ST
- 288. MOONBAY DR
- 289. PHASE 1
- 290. PHASE 2A
- 291. PHASE 2B
- 292. PHASE 3
- 293. PHASE 4
- 294. FUTURE DEVELOPMENT
- 295. RIVER ROAD
- 296. MOONBAY DR
- 297. ORTEGA DR
- 298. WITCHELL ST
- 299. CLAYBROOK ST
- 300. MOONBAY DR
- 301. PHASE 1
- 302. PHASE 2A
- 303. PHASE 2B
- 304. PHASE 3
- 305. PHASE 4
- 306. FUTURE DEVELOPMENT
- 307. RIVER ROAD
- 308. MOONBAY DR
- 309. ORTEGA DR
- 310. WITCHELL ST
- 311. CLAYBROOK ST
- 312. MOONBAY DR
- 313. PHASE 1
- 314. PHASE 2A
- 315. PHASE 2B
- 316. PHASE 3
- 317. PHASE 4
- 318. FUTURE DEVELOPMENT
- 319. RIVER ROAD
- 320. MOONBAY DR
- 321. ORTEGA DR
- 322. WITCHELL ST
- 323. CLAYBROOK ST
- 324. MOONBAY DR
- 325. PHASE 1
- 326. PHASE 2A
- 327. PHASE 2B
- 328. PHASE 3
- 329. PHASE 4
- 330. FUTURE DEVELOPMENT
- 331. RIVER ROAD
- 332. MOONBAY DR
- 333. ORTEGA DR
- 334. WITCHELL ST
- 335. CLAYBROOK ST
- 336. MOONBAY DR
- 337. PHASE 1
- 338. PHASE 2A
- 339. PHASE 2B
- 340. PHASE 3
- 341. PHASE 4
- 342. FUTURE DEVELOPMENT
- 343. RIVER ROAD
- 344. MOONBAY DR
- 345. ORTEGA DR
- 346. WITCHELL ST
- 347. CLAYBROOK ST
- 348. MOONBAY DR
- 349. PHASE 1
- 350. PHASE 2A
- 351. PHASE 2B
- 352. PHASE 3
- 353. PHASE 4
- 354. FUTURE DEVELOPMENT
- 355. RIVER ROAD
- 356. MOONBAY DR
- 357. ORTEGA DR
- 358. WITCHELL ST
- 359. CLAYBROOK ST
- 360. MOONBAY DR
- 361. PHASE 1
- 362. PHASE 2A
- 363. PHASE 2B
- 364. PHASE 3
- 365. PHASE 4
- 366. FUTURE DEVELOPMENT
- 367. RIVER ROAD
- 368. MOONBAY DR
- 369. ORTEGA DR
- 370. WITCHELL ST
- 371. CLAYBROOK ST
- 372. MOONBAY DR
- 373. PHASE 1
- 374. PHASE 2A
- 375. PHASE 2B
- 376. PHASE 3
- 377. PHASE 4
- 378. FUTURE DEVELOPMENT
- 379. RIVER ROAD
- 380. MOONBAY DR
- 381. ORTEGA DR
- 382. WITCHELL ST
- 383. CLAYBROOK ST
- 384. MOONBAY DR
- 385. PHASE 1
- 386. PHASE 2A
- 387. PHASE 2B
- 388. PHASE 3
- 389. PHASE 4
- 390. FUTURE DEVELOPMENT
- 391. RIVER ROAD
- 392. MOONBAY DR
- 393. ORTEGA DR
- 394. WITCHELL ST
- 395. CLAYBROOK ST
- 396. MOONBAY DR
- 397. PHASE 1
- 398. PHASE 2A
- 399. PHASE 2B
- 400. PHASE 3
- 401. PHASE 4
- 402. FUTURE DEVELOPMENT
- 403. RIVER ROAD
- 404. MOONBAY DR
- 405. ORTEGA DR
- 406. WITCHELL ST
- 407. CLAYBROOK ST
- 408. MOONBAY DR
- 409. PHASE 1
- 410. PHASE 2A
- 411. PHASE 2B
- 412. PHASE 3
- 413. PHASE 4
- 414. FUTURE DEVELOPMENT
- 415. RIVER ROAD
- 416. MOONBAY DR
- 417. ORTEGA DR
- 418. WITCHELL ST
- 419. CLAYBROOK ST
- 420. MOONBAY DR
- 421. PHASE 1
- 422. PHASE 2A
- 423. PHASE 2B
- 424. PHASE 3
- 425. PHASE 4
- 426. FUTURE DEVELOPMENT
- 427. RIVER ROAD
- 428. MOONBAY DR
- 429. ORTEGA DR
- 430. WITCHELL ST
- 431. CLAYBROOK ST
- 432. MOONBAY DR
- 433. PHASE 1
- 434. PHASE 2A
- 435. PHASE 2B
- 436. PHASE 3
- 437. PHASE 4
- 438. FUTURE DEVELOPMENT
- 439. RIVER ROAD
- 440. MOONBAY DR
- 441. ORTEGA DR
- 442. WITCHELL ST
- 443. CLAYBROOK ST
- 444. MOONBAY DR
- 445. PHASE 1
- 446. PHASE 2A
- 447. PHASE 2B
- 448. PHASE 3
- 449. PHASE 4
- 450. FUTURE DEVELOPMENT
- 451. RIVER ROAD
- 452. MOONBAY DR
- 453. ORTEGA DR
- 454. WITCHELL ST
- 455. CLAYBROOK ST
- 456. MOONBAY DR
- 457. PHASE 1
- 458. PHASE 2A
- 459. PHASE 2B
- 460. PHASE 3
- 461. PHASE 4
- 462. FUTURE DEVELOPMENT
- 463. RIVER ROAD
- 464. MOONBAY DR
- 465. ORTEGA DR
- 466. WITCHELL ST
- 467. CLAYBROOK ST
- 468. MOONBAY DR
- 469. PHASE 1
- 470. PHASE 2A
- 471. PHASE 2B
- 472. PHASE 3
- 473. PHASE 4
- 474. FUTURE DEVELOPMENT
- 475. RIVER ROAD
- 476. MOONBAY DR
- 477. ORTEGA DR
- 478. WITCHELL ST
- 479. CLAYBROOK ST
- 480. MOONBAY DR
- 481. PHASE 1
- 482. PHASE 2A
- 483. PHASE 2B
- 484. PHASE 3
- 485. PHASE 4
- 486. FUTURE DEVELOPMENT
- 487. RIVER ROAD
- 488. MOONBAY DR
- 489. ORTEGA DR
- 490. WITCHELL ST
- 491. CLAYBROOK ST
- 492. MOONBAY DR
- 493. PHASE 1
- 494. PHASE 2A
- 495. PHASE 2B
- 496. PHASE 3
- 497. PHASE 4
- 498. FUTURE DEVELOPMENT
- 499. RIVER ROAD
- 500. MOONBAY DR
- 501. ORTEGA DR
- 502. WITCHELL ST
- 503. CLAYBROOK ST
- 504. MOONBAY DR
- 505. PHASE 1
- 506. PHASE 2A
- 507. PHASE 2B
- 508. PHASE 3
- 509. PHASE 4
- 510. FUTURE DEVELOPMENT
- 511. RIVER ROAD
- 512. MOONBAY DR
- 513. ORTEGA DR
- 514. WITCHELL ST
- 515. CLAYBROOK ST
- 516. MOONBAY DR
- 517. PHASE 1
- 518. PHASE 2A
- 519. PHASE 2B
- 520. PHASE 3
- 521. PHASE 4
- 522. FUTURE DEVELOPMENT
- 523. RIVER ROAD
- 524. MOONBAY DR
- 525. ORTEGA DR
- 526. WITCHELL ST
- 527. CLAYBROOK ST
- 528. MOONBAY DR
- 529. PHASE 1
- 530. PHASE 2A
- 531. PHASE 2B
- 532. PHASE 3
- 533. PHASE 4
- 534. FUTURE DEVELOPMENT
- 535. RIVER ROAD
- 536. MOONBAY DR
- 537. ORTEGA DR
- 538. WITCHELL ST
- 539. CLAYBROOK ST
- 540. MOONBAY DR
- 541. PHASE 1
- 542. PHASE 2A
- 543. PHASE 2B
- 544. PHASE 3
- 545. PHASE 4
- 546. FUTURE DEVELOPMENT
- 547. RIVER ROAD
- 548. MOONBAY DR
- 549. ORTEGA DR
- 550. WITCHELL ST
- 551. CLAYBROOK ST
- 552. MOONBAY DR
- 553. PHASE 1
- 554. PHASE 2A
- 555. PHASE 2B
- 556. PHASE 3
- 557. PHASE 4
- 558. FUTURE DEVELOPMENT
- 559. RIVER ROAD
- 560. MOONBAY DR
- 561. ORTEGA DR
- 562. WITCHELL ST
- 563. CLAYBROOK ST
- 564. MOONBAY DR
- 565. PHASE 1
- 566. PHASE 2A
- 567. PHASE 2B
- 568. PHASE 3
- 569. PHASE 4
- 570. FUTURE DEVELOPMENT
- 571. RIVER ROAD
- 572. MOONBAY DR
- 573. ORTEGA DR
- 574. WITCHELL ST
- 575. CLAYBROOK ST
- 576. MOONBAY DR
- 577. PHASE 1
- 578. PHASE 2A
- 579. PHASE 2B
- 580. PHASE 3
- 581. PHASE 4
- 582. FUTURE DEVELOPMENT
- 583. RIVER ROAD
- 584. MOONBAY DR
- 585. ORTEGA DR
- 586. WITCHELL ST
- 587. CLAYBROOK ST
- 588. MOONBAY DR
- 589. PHASE 1
- 590. PHASE 2A
- 591. PHASE 2B
- 592. PHASE 3
- 593. PHASE 4
- 594. FUTURE DEVELOPMENT
- 595. RIVER ROAD
- 596. MOONBAY DR
- 597. ORTEGA DR
- 598. WITCHELL ST
- 599. CLAYBROOK ST
- 600. MOONBAY DR
- 601. PHASE 1
- 602. PHASE 2A
- 603. PHASE 2B
- 604. PHASE 3
- 605. PHASE 4
- 606. FUTURE DEVELOPMENT
- 607. RIVER ROAD
- 608. MOONBAY DR
- 609. ORTEGA DR
- 610. WITCHELL ST
- 611. CLAYBROOK ST
- 612. MOONBAY DR
- 613. PHASE 1
- 614. PHASE 2A
- 615. PHASE 2B
- 616. PHASE 3
- 617. PHASE 4
- 618. FUTURE DEVELOPMENT
- 619. RIVER ROAD
- 620. MOONBAY DR
- 621. ORTEGA DR
- 622. WITCHELL ST
- 623. CLAYBROOK ST
- 624. MOONBAY DR
- 625. PHASE 1
- 626. PHASE 2A
- 627. PHASE 2B
- 628. PHASE 3
- 629. PHASE 4
- 630. FUTURE DEVELOPMENT
- 631. RIVER ROAD
- 632. MOONBAY DR
- 633. ORTEGA DR
- 634. WITCHELL ST
- 635. CLAYBROOK ST
- 636. MOONBAY DR
- 637. PHASE 1
- 638. PHASE 2A
- 639. PHASE 2B
- 640. PHASE 3
- 641. PHASE 4
- 642. FUTURE DEVELOPMENT
- 643. RIVER ROAD
- 644. MOONBAY DR
- 645. ORTEGA DR
- 646. WITCHELL ST
- 647. CLAYBROOK ST
- 648. MOONBAY DR
- 649. PHASE 1
- 650. PHASE 2A
- 651. PHASE 2B
- 652. PHASE 3
- 653. PHASE 4
- 654. FUTURE DEVELOPMENT
- 655. RIVER ROAD
- 656. MOONBAY DR
- 657. ORTEGA DR
- 658. WITCHELL ST
- 659. CLAYBROOK ST
- 660. MOONBAY DR
- 661. PHASE 1
- 662. PHASE 2A
- 663. PHASE 2B
- 664. PHASE 3
- 665. PHASE 4
- 666. FUTURE DEVELOPMENT
- 667. RIVER ROAD
- 668. MOONBAY DR
- 669. ORTEGA DR
- 670. WITCHELL ST
- 671. CLAYBROOK ST
- 672. MOONBAY DR
- 673. PHASE 1
- 674. PHASE 2A
- 675. PHASE 2B
- 676. PHASE 3
- 677. PHASE 4
- 678. FUTURE DEVELOPMENT
- 679. RIVER ROAD
- 680. MOONBAY DR
- 681. ORTEGA DR
- 682. WITCHELL ST
- 683. CLAYBROOK ST
- 684. MOONBAY DR
- 685. PHASE 1
- 686. PHASE 2A
- 687. PHASE 2B
- 688. PHASE 3
- 689. PHASE 4
- 690. FUTURE DEVELOPMENT
- 691. RIVER ROAD
- 692. MOONBAY DR
- 693. ORTEGA DR
- 694. WITCHELL ST
- 695. CLAYBROOK ST
- 696. MOONBAY DR
- 697. PHASE 1
- 698. PHASE 2A
- 699. PHASE 2B
- 700. PHASE 3
- 701. PHASE 4
- 702. FUTURE DEVELOPMENT
- 703. RIVER ROAD
- 704. MOONBAY DR
- 705. ORTEGA DR
- 706. WITCHELL ST
- 707. CLAYBROOK ST
- 708. MOONBAY DR
- 709. PHASE 1
- 710. PHASE 2A
- 711. PHASE 2B
- 712. PHASE 3
- 713. PHASE 4
- 714. FUTURE DEVELOPMENT
- 715. RIVER ROAD
- 716. MOONBAY DR
- 717. ORTEGA DR
- 718. WITCHELL ST
- 719. CLAYBROOK ST
- 720. MOONBAY DR
- 721. PHASE 1
- 722. PHASE 2A
- 723. PHASE 2B
- 724. PHASE 3
- 725. PHASE 4
- 726. FUTURE DEVELOPMENT
- 727. RIVER ROAD
- 728. MOONBAY DR
- 729. ORTEGA DR
- 730. WITCHELL ST
- 731. CLAYBROOK ST
- 732. MOONBAY DR
- 733. PHASE 1
- 734. PHASE 2A
- 735. PHASE 2B
- 736. PHASE 3
- 737. PHASE 4
- 738. FUTURE DEVELOPMENT
- 739. RIVER ROAD
- 740. MOONBAY DR
- 741. ORTEGA DR
- 742. WITCHELL ST
- 743. CLAYBROOK ST
- 744. MOONBAY DR
- 745. PHASE 1
- 746. PHASE 2A
- 747. PHASE 2B
- 748. PHASE 3
- 749. PHASE 4
- 750. FUTURE DEVELOPMENT
- 751. RIVER ROAD
- 752. MOONBAY DR
- 753. ORTEGA DR
- 754. WITCHELL ST
- 755. CLAYBROOK ST
- 756. MOONBAY DR
- 757. PHASE 1
- 758. PHASE 2A
- 759. PHASE 2B
- 760. PHASE 3
- 761. PHASE 4
- 762. FUTURE DEVELOPMENT
- 763. RIVER ROAD
- 764. MOONBAY DR
- 765. ORTEGA DR
- 766. WITCHELL ST
- 767. CLAYBROOK ST
- 768. MOONBAY DR
- 769. PHASE 1
- 770. PHASE 2A
- 771. PHASE 2B
- 772. PHASE 3
- 773. PHASE 4
- 774. FUTURE DEVELOPMENT
- 775. RIVER ROAD
- 776. MOONBAY DR
- 777. ORTEGA DR
- 778. WITCHELL ST
- 779. CLAYBROOK ST
- 780. MOONBAY DR
- 781. PHASE 1
- 782. PHASE 2A
- 783. PHASE 2B
- 784. PHASE 3
- 785. PHASE 4
- 786. FUTURE DEVELOPMENT
- 787. RIVER ROAD
- 788. MOONBAY DR
- 789. ORTEGA DR
- 790. WITCHELL ST
- 791. CLAYBROOK ST
- 792. MOONBAY DR
- 793. PHASE 1
- 794. PHASE 2A
- 795. PHASE 2B
- 796. PHASE 3
- 797. PHASE 4
- 798. FUTURE DEVELOPMENT
- 799. RIVER ROAD
- 800. MOONBAY DR
- 801. ORTEGA DR
- 802. WITCHELL ST
- 803. CLAYBROOK ST
- 804. MOONBAY

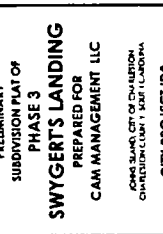


PLANNING USE ONLY
 PREPARED FOR
 SWYGETT'S LANDING
 PREPARED FOR
 CAM MANAGEMENT LLC

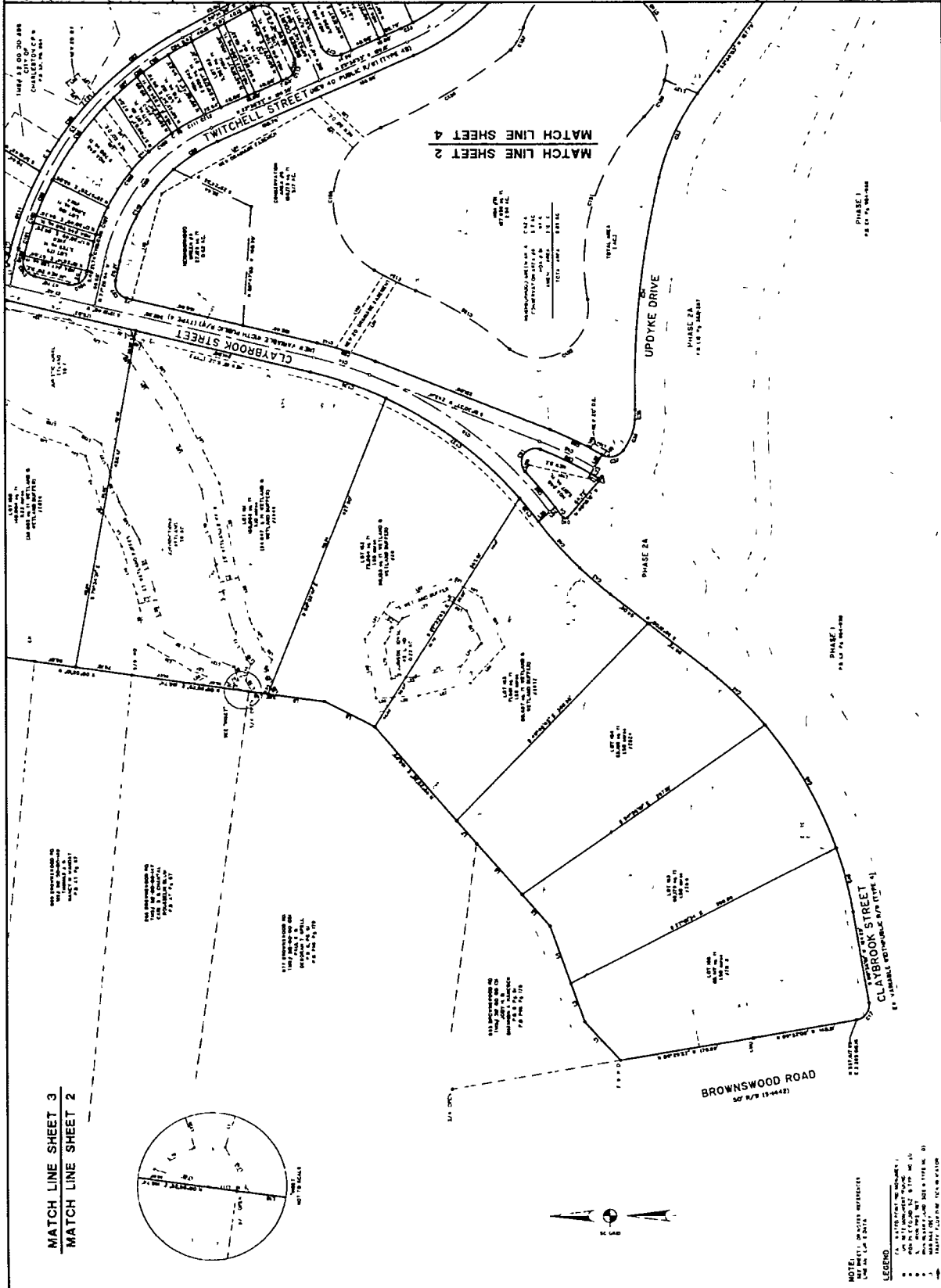
PRELIMINARY
 SUBDIVISION PLAT OF
PHASE 3
SWYGETT'S LANDING
 PREPARED FOR
 CAM MANAGEMENT LLC

JOHN SWYGETT, CITY OF CHARLESTON,
 CHARLESTON COUNTY, SOUTH CAROLINA
 CITY PROJECT ID#
130717 CLAYBROOK 1

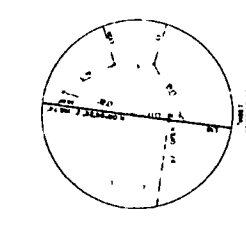
THOMAS & HUTTON
 482 Johnnie Dodds Blvd, Suite 100
 Mt Pleasant, SC 29463-1327
 P 803 874-2000 F 803 874-0703



DATE: 10/14/09
 SHEET 2 OF 4



MATCH LINE SHEET 3
 MATCH LINE SHEET 2



NOTE:
 ALL DIMENSIONS ARE IN FEET AND INCHES.
 ALL DIMENSIONS ARE TO CENTERLINE UNLESS OTHERWISE NOTED.
 ALL DIMENSIONS ARE TO FACE UNLESS OTHERWISE NOTED.
 ALL DIMENSIONS ARE TO CENTERLINE UNLESS OTHERWISE NOTED.
 ALL DIMENSIONS ARE TO FACE UNLESS OTHERWISE NOTED.

LEGEND:
 1. 1/4" = 1' SCALE
 2. 1/8" = 1' SCALE
 3. 1/16" = 1' SCALE
 4. 1/32" = 1' SCALE
 5. 1/64" = 1' SCALE
 6. 1/128" = 1' SCALE
 7. 1/256" = 1' SCALE
 8. 1/512" = 1' SCALE
 9. 1/1024" = 1' SCALE
 10. 1/2048" = 1' SCALE
 11. 1/4096" = 1' SCALE
 12. 1/8192" = 1' SCALE
 13. 1/16384" = 1' SCALE
 14. 1/32768" = 1' SCALE
 15. 1/65536" = 1' SCALE
 16. 1/131072" = 1' SCALE
 17. 1/262144" = 1' SCALE
 18. 1/524288" = 1' SCALE
 19. 1/1048576" = 1' SCALE
 20. 1/2097152" = 1' SCALE
 21. 1/4194304" = 1' SCALE
 22. 1/8388608" = 1' SCALE
 23. 1/16777216" = 1' SCALE
 24. 1/33554432" = 1' SCALE
 25. 1/67108864" = 1' SCALE
 26. 1/134217728" = 1' SCALE
 27. 1/268435456" = 1' SCALE
 28. 1/536870912" = 1' SCALE
 29. 1/1073741824" = 1' SCALE
 30. 1/2147483648" = 1' SCALE
 31. 1/4294967296" = 1' SCALE
 32. 1/8589934592" = 1' SCALE
 33. 1/17179869184" = 1' SCALE
 34. 1/34359738368" = 1' SCALE
 35. 1/68719476736" = 1' SCALE
 36. 1/137438953472" = 1' SCALE
 37. 1/274877906944" = 1' SCALE
 38. 1/549755813888" = 1' SCALE
 39. 1/1099511627776" = 1' SCALE
 40. 1/2199023255552" = 1' SCALE
 41. 1/4398046511104" = 1' SCALE
 42. 1/8796093022208" = 1' SCALE
 43. 1/17592186044416" = 1' SCALE
 44. 1/35184372088832" = 1' SCALE
 45. 1/70368744177664" = 1' SCALE
 46. 1/140737488355328" = 1' SCALE
 47. 1/281474976710656" = 1' SCALE
 48. 1/562949953421312" = 1' SCALE
 49. 1/1125899906842624" = 1' SCALE
 50. 1/2251799813685248" = 1' SCALE
 51. 1/4503599627370496" = 1' SCALE
 52. 1/9007199254740992" = 1' SCALE
 53. 1/18014398509481984" = 1' SCALE
 54. 1/36028797018963968" = 1' SCALE
 55. 1/72057594037927936" = 1' SCALE
 56. 1/144115188075855872" = 1' SCALE
 57. 1/288230376151711744" = 1' SCALE
 58. 1/576460752303423488" = 1' SCALE
 59. 1/1152921504606846976" = 1' SCALE
 60. 1/2305843009213693952" = 1' SCALE
 61. 1/4611686018427387904" = 1' SCALE
 62. 1/9223372036854775808" = 1' SCALE
 63. 1/18446744073709551616" = 1' SCALE
 64. 1/36893488147419103232" = 1' SCALE
 65. 1/73786976294838206464" = 1' SCALE
 66. 1/147573952589676412928" = 1' SCALE
 67. 1/295147905179352825856" = 1' SCALE
 68. 1/590295810358705651712" = 1' SCALE
 69. 1/1180591620717411303424" = 1' SCALE
 70. 1/2361183241434822606848" = 1' SCALE
 71. 1/4722366482869645213696" = 1' SCALE
 72. 1/9444732965739290427392" = 1' SCALE
 73. 1/18889465931478580854784" = 1' SCALE
 74. 1/37778931862957161709568" = 1' SCALE
 75. 1/75557863725914323419136" = 1' SCALE
 76. 1/151115727451828646838272" = 1' SCALE
 77. 1/302231454903657293676544" = 1' SCALE
 78. 1/604462909807314587353088" = 1' SCALE
 79. 1/1208925819614629174706176" = 1' SCALE
 80. 1/2417851639229258349412352" = 1' SCALE
 81. 1/4835703278458516698824704" = 1' SCALE
 82. 1/9671406556917033397649408" = 1' SCALE
 83. 1/19342813113834066795298816" = 1' SCALE
 84. 1/38685626227668133590597632" = 1' SCALE
 85. 1/77371252455336267181195264" = 1' SCALE
 86. 1/154742504910672534362390528" = 1' SCALE
 87. 1/309485009821345068724781056" = 1' SCALE
 88. 1/618970019642690137449562112" = 1' SCALE
 89. 1/1237940039285380274899124224" = 1' SCALE
 90. 1/2475880078570760549798248448" = 1' SCALE
 91. 1/4951760157141521099596496896" = 1' SCALE
 92. 1/9903520314283042199192993792" = 1' SCALE
 93. 1/19807040628566084398385987584" = 1' SCALE
 94. 1/39614081257132168796771975168" = 1' SCALE
 95. 1/79228162514264337593543950336" = 1' SCALE
 96. 1/158456325028528675187087900672" = 1' SCALE
 97. 1/316912650057057350374175801344" = 1' SCALE
 98. 1/633825300114114700748351602688" = 1' SCALE
 99. 1/1267650600228229401496703205376" = 1' SCALE
 100. 1/2535301200456458802993406410752" = 1' SCALE
 101. 1/5070602400912917605986812821504" = 1' SCALE
 102. 1/10141204801825835211973625643008" = 1' SCALE
 103. 1/20282409603651670423947251286016" = 1' SCALE
 104. 1/40564819207303340847894502572032" = 1' SCALE
 105. 1/81129638414606681695789005144064" = 1' SCALE
 106. 1/162259276829213363391578010288128" = 1' SCALE
 107. 1/324518553658426726783156020576256" = 1' SCALE
 108. 1/649037107316853453566312041152512" = 1' SCALE
 109. 1/1298074214633706907132624082305024" = 1' SCALE
 110. 1/2596148429267413814265248164610048" = 1' SCALE
 111. 1/5192296858534827628530496329220096" = 1' SCALE
 112. 1/10384593717069655257060992658440192" = 1' SCALE
 113. 1/20769187434139310514121985316880384" = 1' SCALE
 114. 1/41538374868278621028243970633760768" = 1' SCALE
 115. 1/83076749736557242056487941267521536" = 1' SCALE
 116. 1/166153499473114484112975882535042704" = 1' SCALE
 117. 1/332306998946228968225951765070085408" = 1' SCALE
 118. 1/664613997892457936451903530140170816" = 1' SCALE
 119. 1/1329227995784915872903807060283411632" = 1' SCALE
 120. 1/2658455991569831745807614120566823264" = 1' SCALE
 121. 1/5316911983139663491615228241133646528" = 1' SCALE
 122. 1/10633823966279326983230456482267293056" = 1' SCALE
 123. 1/21267647932558653966460912964534586112" = 1' SCALE
 124. 1/42535295865117307932921825929069172224" = 1' SCALE
 125. 1/85070591730234615865843651858138344448" = 1' SCALE
 126. 1/170141183460469231731687303716276688896" = 1' SCALE
 127. 1/34028236692093846346337460743255337792" = 1' SCALE
 128. 1/68056473384187692692674921486510675584" = 1' SCALE
 129. 1/13611294676837538538534984297302135168" = 1' SCALE
 130. 1/27222589353675077077069968594604270336" = 1' SCALE
 131. 1/54445178707350154154139937189208540672" = 1' SCALE
 132. 1/108890357414700308308279874378417081344" = 1' SCALE
 133. 1/217780714829400616616559748756834162688" = 1' SCALE
 134. 1/435561429658801233233119497513668325376" = 1' SCALE
 135. 1/871122859317602466466238995027336650752" = 1' SCALE
 136. 1/174224571863520493293247799005473310144" = 1' SCALE
 137. 1/348449143727040986586495598010946620288" = 1' SCALE
 138. 1/696898287454081973172991196021893244576" = 1' SCALE
 139. 1/1393796574908163946345982392043786489152" = 1' SCALE
 140. 1/2787593149816327892691964784087572978304" = 1' SCALE
 141. 1/5575186299632655785383929568175145956608" = 1' SCALE
 142. 1/11150372599265311570767859136352311913216" = 1' SCALE
 143. 1/22300745198530623141535718272704623826432" = 1' SCALE
 144. 1/446014903970612462830714365454092475328" = 1' SCALE
 145. 1/892029807941224925661428730908184950656" = 1' SCALE
 146. 1/1784059615882449851322857461816369901312" = 1' SCALE
 147. 1/3568119231764899702645714923632739802624" = 1' SCALE
 148. 1/7136238463529799405291429847265479605248" = 1' SCALE
 149. 1/14272476927059598810582859694530959210496" = 1' SCALE
 150. 1/28544953854119197621165719389061918421" = 1' SCALE
 151. 1/57089907708238395242331438778123836842" = 1' SCALE
 152. 1/114179815416476790484662877556247673684" = 1' SCALE
 153. 1/228359630832953580969325755112495347368" = 1' SCALE
 154. 1/456719261665907161938651510224990694736" = 1' SCALE
 155. 1/913438523331814323877303020449981395472" = 1' SCALE
 156. 1/1826877046663628647754606040899826800944" = 1' SCALE
 157. 1/3653754093327257295509212081799653601888" = 1' SCALE
 158. 1/7307508186654514591018424163599307203776" = 1' SCALE
 159. 1/14615016373309029182036848327198614075552" = 1' SCALE
 160. 1/2923003274661805836407369665439722815104" = 1' SCALE
 161. 1/5846006549323611672814739330879445630208" = 1' SCALE
 162. 1/11692013098647223345629478661758891260416" = 1' SCALE
 163. 1/2338402619729444669125895732351778252032" = 1' SCALE
 164. 1/4676805239458889338251791464703556504064" = 1' SCALE
 165. 1/9353610478917778676503582929407113008128" = 1' SCALE
 166. 1/18707220957835557353007165858814226016384" = 1' SCALE
 167. 1/37414441915671114706014331717628452032768" = 1' SCALE
 168. 1/74828883831342229412028663435256904065536" = 1' SCALE
 169. 1/14965776766268445882405732687051380813072" = 1' SCALE
 170. 1/29931553532536891764811465374102761626144" = 1' SCALE
 171. 1/59863107065073783529622930748205523252288" = 1' SCALE
 172. 1/119726214130147567059245861496411045104576" = 1' SCALE
 173. 1/239452428260295134118491722992822090209152" = 1' SCALE
 174. 1/478904856520590268236983445985644180418304" = 1' SCALE
 175. 1/957809713041180536473966891971288360836608" = 1' SCALE
 176. 1/1915619426082361072947933839942576721673216" = 1' SCALE
 177. 1/3831238852164722145895867679885153443346432" = 1' SCALE
 178. 1/7662477704329444291791735359770306886692864" = 1' SCALE
 179. 1/153249554086588885835834707195406137333856" = 1' SCALE
 180. 1/306499108173177771671669414390812274667712" = 1' SCALE
 181. 1/612998216346355543343338828781624549335424" = 1' SCALE
 182. 1/122599643269271108668667765756324909867088" = 1' SCALE
 183. 1/245199286538542217337335531512649819734176" = 1' SCALE
 184. 1/490398573077084434674671063025299639468352" = 1' SCALE
 185. 1/980797146154168869349342126050599278936704" = 1' SCALE
 186. 1/1961594292288337738698684252101198557813408" = 1' SCALE
 187. 1/3923188584576675477397368504202397115626816" = 1' SCALE
 188. 1/784637716915335095479473700840479423125328" = 1' SCALE
 189. 1/1569275433830670190958947401680958846250656" = 1' SCALE
 190. 1/3138550867661340381917894803361917692501312" = 1' SCALE
 191. 1/6277101735322680763835789606723835385002624" = 1' SCALE
 192. 1/12554203470645361527671579213447670770005248" = 1' SCALE
 193. 1/25108406941290723055343158426895341540010496" = 1' SCALE
 194. 1/50216813882581446110686316853790683080020992" = 1' SCALE
 195. 1/10043362776516289222137263370758136160041984" = 1' SCALE
 196. 1/20086725553032578444274526741516272230083968" = 1' SCALE
 197. 1/4017345110606515688854905348303254460017936" = 1' SCALE
 198. 1/8034690221213031377709810696606508920035872" = 1' SCALE
 199. 1/16069380442426062755419621393213017840071648" = 1' SCALE
 200. 1/3213876088485212551083924278642603568014304" = 1' SCALE
 201. 1/6427752176970425102167848557285207136028608" = 1' SCALE
 202. 1/12855504353940850204335697114570414320573216" = 1' SCALE
 203. 1/25711008707881700408671394229140828641146432" = 1' SCALE
 204. 1/5142201741576340081734278857828165728229264" = 1' SCALE
 205. 1/1028440348315268016346855771565631145645856" = 1' SCALE
 206. 1/2056880696630536032693711543131262291291712" = 1' SCALE
 207. 1/4113761393261072065387423086262524522583424" = 1' SCALE
 208. 1/8227522786522144130774846172525049045166848" = 1' SCALE
 209. 1/1645504557304428826154969234505009809033376" = 1' SCALE
 210. 1/3291009114608857652309938469010019180066752" = 1' SCALE
 211. 1/658201822921771530461987693802003836013344" = 1' SCALE
 212. 1/1316403645843543060923975387604007672026688" = 1' SCALE
 213. 1/2632807291687086121847950775208015344053376" = 1' SCALE
 214. 1/5265614583374172243695901550416030688106752" = 1' SCALE
 215. 1/1053122916674354448739180310083206173621344" = 1' SCALE
 216. 1/2106245833348708897478360620166412324426688" = 1' SCALE
 217. 1/4212491666697417794956721240332824648853376" = 1' SCALE
 218. 1/8424983333394835589913442480665649297706752" = 1' SCALE
 219. 1/16849966667989671179826884961331298555413504" = 1' SCALE
 220. 1/33699933335979342359653769922662591110827008" = 1' SCALE
 221. 1/67399866671958684719307539845325182216514176" = 1' SCALE
 222. 1/13479973334391736943861507969050364443302832" = 1' SCALE
 223. 1/26959946668783473887723015938100728886605664" = 1' SCALE
 224. 1/53919893337566947775446031876201457773211328" = 1' SCALE
 225. 1/10783978667513389555089206375240291554642256" = 1' SCALE
 226. 1/2156795733502677911017841275048058310928512" = 1' SCALE
 227. 1/431359146700535582203568255009611661857024" = 1' SCALE
 228. 1/862718293401071164407136510019223323374048" = 1' SCALE
 229. 1/172543658680214232881433022003844664674816" = 1' SCALE
 230. 1/345087317360428465762866044007689329349632" = 1' SCALE
 231. 1/690174634720856931525732088015378658699264" = 1' SCALE
 232. 1/1380349269441713863051464176030757317398528" = 1' SCALE
 233. 1/2760698538883427726102928352061514636797056" = 1' SCALE
 234. 1/5521397077766855452205856704123029273594112" = 1' SCALE
 235. 1/1104279415553371090441171340824605846718848" = 1' SCALE
 236. 1/2208558831106742180882342



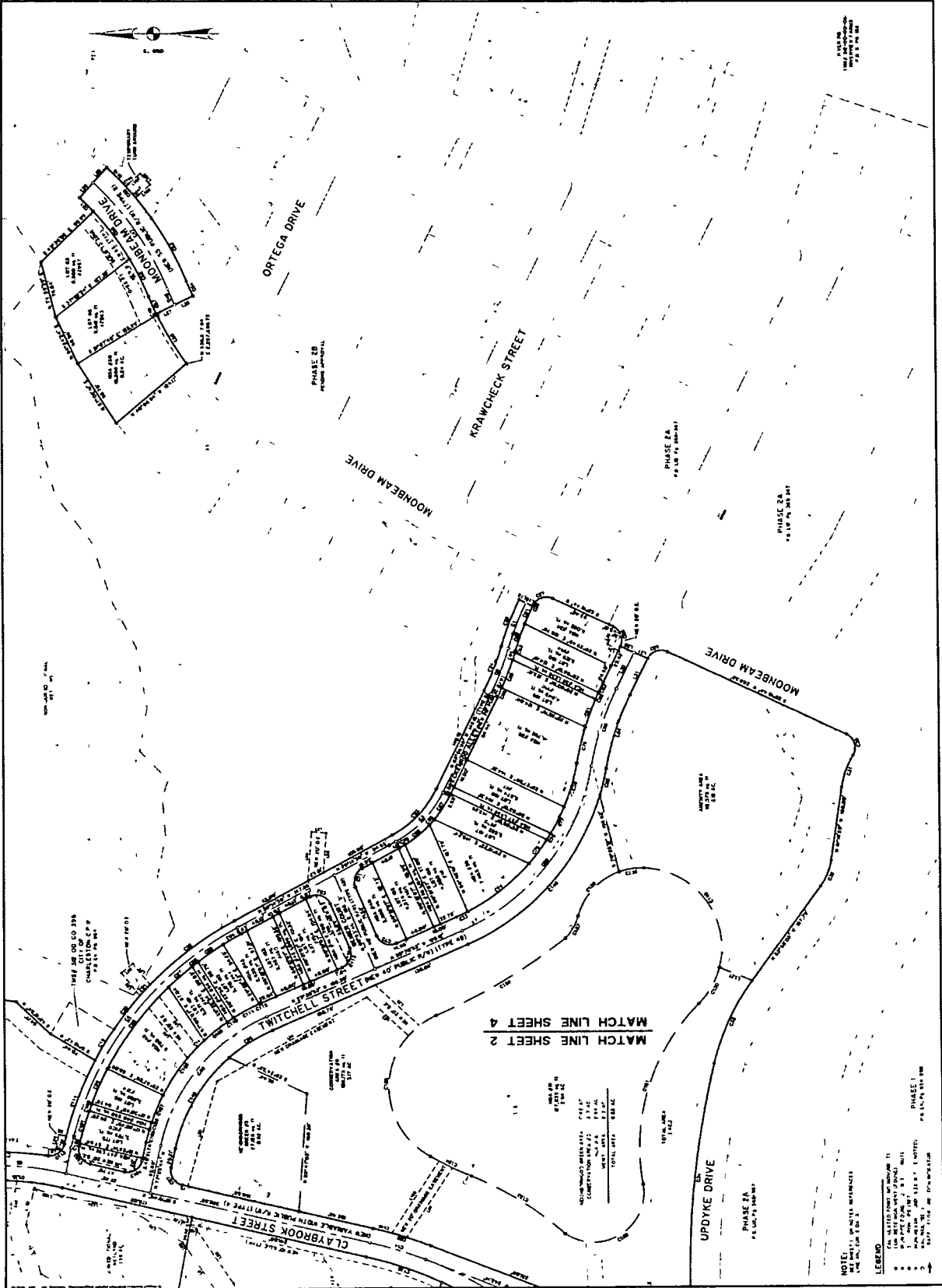
PLANNING USE ONLY
 DATE: 7/20/03
 DRAWN BY: J. HUTTON
 APPROVED BY: J. HUTTON
 PROJECT: SWYBERT'S LANDING

PRELIMINARY
 SUBDIVISION PLAT OF
PHASE 3
SWYBERT'S LANDING
 PREPARED FOR
 CAM MANAGEMENT LC
 625 JOYHNS DODDAS BLVD SUITE 100
 FORT WORTH, TEXAS 76103
 CITY PROJECT ID#9
 130717-CLAYBROOK1

THOMAS & HUTTON
 Registered Professional Surveyors (No. 1) License
 482 Johnson Doddas Blvd Suite 100
 Fort Worth, Texas 76103
 Tel: 817.341.1322
 Fax: 817.341.1323
 E-Mail: thutton@thomashutton.com



DATE: 7/20/03
 SHEET 3 OF 4



RECORDER'S PAGE

NOTE: This page **MUST** remain with the original document



RECORDED		
Date:	April 27, 2015	
Time:	4:27:17 PM	
<u>Book</u>	<u>Page</u>	<u>DocType</u>
0471	935	Misc
Charlie Lybrand, Register Charleston County, SC		

Filed By:

THOMAS & HUTTON ENGINEERING
TIM ROLAND
POST OFFICE BOX 1522
MT PLEASANT, SC 29465

MAKER:

CAM MANAGEMENT LLC

RECIPIENT:

N/A

Original Book:

0144

Original Page:

369

of Pages:

of Sats: # of References:

Note:

Recording Fee	\$ 10 00
Extra Reference Cost	\$ -
Extra Pages	\$ 2 00
Postage	\$ 0 50
Chattel	\$ -
TOTAL	\$ 12 50

DRAWER

CLERK



0471
Book



935
Page



04/27/2015
Recorded Date



7
Pgs



0144
Original Book



369
Original Page



D
Doc Type



16 27 17
Recorded Time